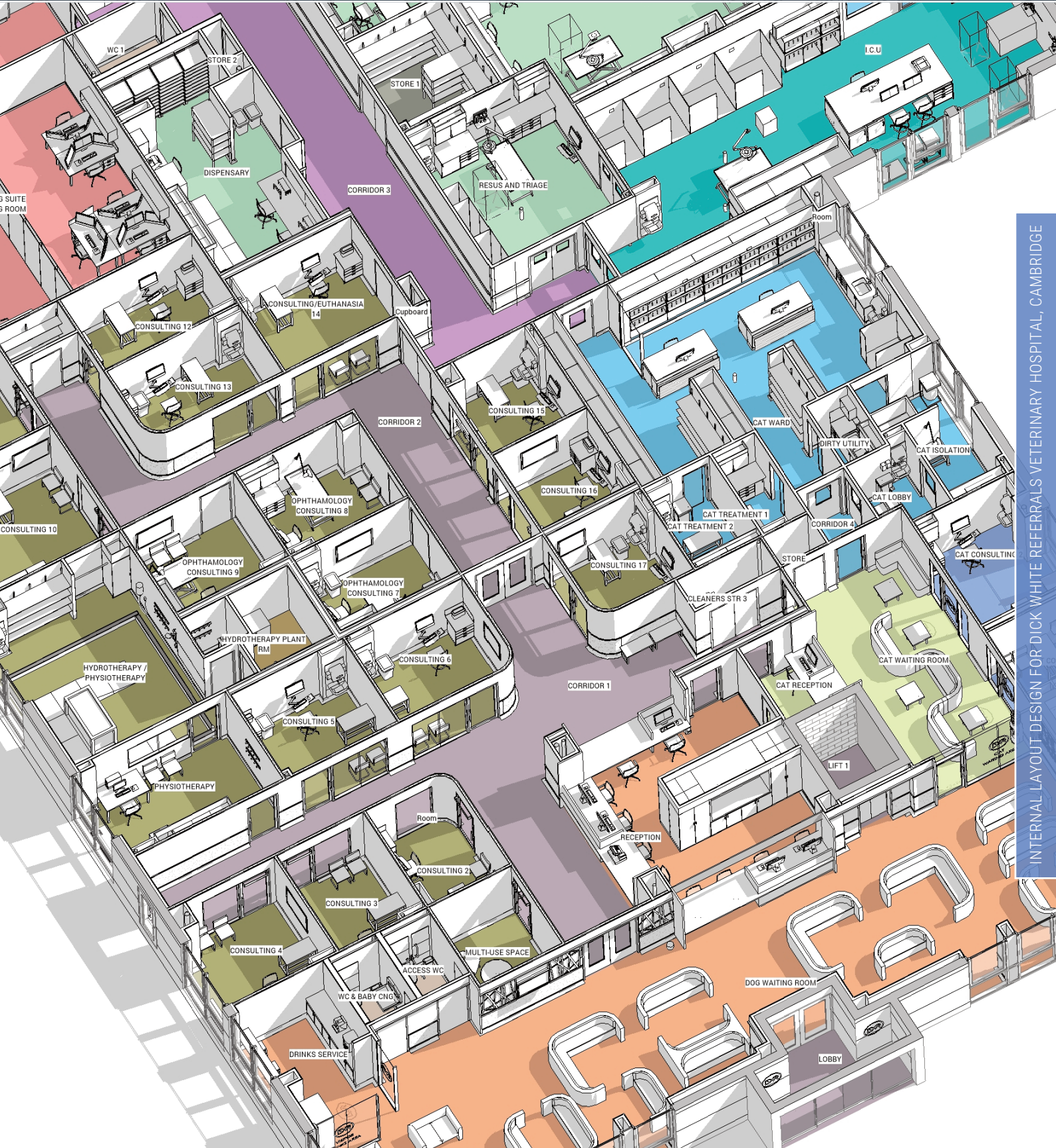


# MILLMOUNT NEWS SPRING 2019



INTERNAL LAYOUT DESIGN FOR DICK WHITE REFERRALS VETERINARY HOSPITAL, CAMBRIDGE



# ENVIRONMENTAL UPGRADE FOR BYKER ESTATE RESIDENTS

Residents of the Grade II Listed Byker Wall Estate are being consulted on environmental improvement proposals for their neighbourhood following the announcement by the Byker Community Trust (BCT) of a £4m environmental upgrade project which is being led by ourselves.

The project, which completes the delivery of the official stock transfer investment promises, from when the Estate was transferred from Newcastle City Council to BCT, forms part of BCT's investment programme which has committed over £31m funding to date. The project will be delivered in partnership with BCT, ourselves, landscape architects Glen Kemp and Todd Milburn Partnership and an extensive period of consultation with residents started in February 2019.

Nicky Watson, Director of JDDK Architects, added, "We're obviously delighted to have been appointed and to be returning to work in the Byker Estate, an environment we're very familiar with having worked on the refurbishment of some of the original 'Hobby Rooms' into modern living spaces in 2015. In addition, Gerry Kemp, consultant to our Landscape Architect partners,

Glen Kemp Ltd, actually worked with Ralph Erskine on the original scheme in the late 1970's and was one of the co-authors of "A Byker Future - The Conservation Plan for the Byker Redevelopment."

"Our designs for the pilot area, which we developed after consulting with the tenants' Steering Group, concentrated on the external landscaping, providing options for cohesive fencing to gardens, communal bin stores, the creation of more private streets, new wildflower areas, new boundary hedges and tree planting, new seating and play areas and the creation of hard landscaped areas as communal meeting places.

"The designs also included refurbishing steps with handrails and buggy ramps and the increase of parking provision closer to dwellings."

The project is proceeding with analysis of the feedback from the consultations with residents of the Estate and other stakeholders, before design proposals are shared with the community ahead of applications for planning and listed building consents being submitted.

**Jill Haley, Chief Executive of BCT, commented:**

*"We've appointed JDDK Architects after a comprehensive tendering process that saw six shortlisted design teams invited to submit tender proposals including recommendations for a pilot area which reflected the environmental challenges Byker faces.*

*"The six design teams were given the opportunity to meet a Steering Group of Byker residents who were able to give invaluable insight on the environmental issues affecting the Estate and their preferred options to resolve these.*

*"JDDK's experience in consultation exercises and their understanding of the Grade II Listed Estate were obviously important factors in their appointment and we look forward to working closely with them on the design and implementation of this exciting project".*

The Consultation has begun with residents of the Byker Wall Estate.



# SUE RYDER PROJECTS UPDATE



A CGI of the new build wing at Dee View, Aberdeen

We currently have three ongoing projects for Sue Ryder who provide palliative, neurological and bereavement support nationwide.

At Dee View Court in the Kincorth area of Aberdeen, construction work is well underway on a £3.9m new build extension which will double the size of Scotland's only purpose-built specialist neurological centre. Dee View Court currently provides care for 22 residents with a range of conditions including multiple sclerosis, Parkinson's disease and Huntington's disease, as well as providing self management support for people with neurological conditions who live in their homes in Aberdeen.

At the D'Urton Manor development, in Eastway, North West Preston, construction work has recently begun on their brand new Neurological Care Centre, Lancashire following our Planning Application being granted in April last year. The scheme proposes an innovative rehabilitative and therapeutic 40 bed neurological care centre for adults with complex medical conditions such as multiple sclerosis, Motor Neurone Disease and acquired brain injury.

In addition, there will be two pairs of semi-detached bungalows for residents needing either continued rehabilitation for their recovery or for

those with complex care needs who require one-to-one support to enable them to live life to their full potential in a safe, secure and homely environment.

Finally, at The Chantry, a Grade II listed building in Ipswich, our scheme to convert the former dining area into three new purpose-built ground floor bedrooms for people requiring specialist neurological rehabilitation, each with en-suite wet room, alongside a staff WC and two accessible WC's, was completed in October 2018. Dining facilities have been relocated to the original dining room within the existing building allowing residents to enjoy the view out to the gardens through the bay window, enhancing their experience.

**Adam Vaughan, JDDK Director, commented,**

*"The three schemes do exemplify the breadth of our work for Sue Ryder, not only geographically, ranging from Aberdeen to Ipswich, but also the scale and type of projects. From new build facilities as at Preston to the complex conversions of a listed building at Ipswich."*

## RICS, RIBA AND LABC SHORTLIST SUCCESS

We're delighted to announce that three of our projects have been shortlisted in their respective regions in the RICS Awards 2019.



The Rutherford Cancer Centre North East

The Sherwood Forest Visitor Centre has been short-listed in the Community Benefit and Tourism and Leisure categories in the East Midlands region whilst the Rutherford Cancer Centre, Thames Valley, has been short-listed in the Design Through Innovation category in the South East region and the Rutherford Cancer Centre, North East, has been shortlisted in the North East region, also in the Design Through Innovation category.



The Sherwood Forest Visitor Centre

The Sherwood Forest Visitor Centre has also been shortlisted for a RIBA East Midlands Award and in two categories, Best Public Service Building and Best Small Commercial Project, of the East Midlands LABC Building Excellence Awards. The winners will be decided at the respective regional award ceremonies in April and May.

## SELWYN GOLDSMITH AWARD FOR THE SILL



The living roof of The Sill is set at a gentle and access-friendly 1:21 slope.

At the 60th Anniversary Civic Trust and Selwyn Goldsmith Awards Ceremony, Northumberland National Park Authority's The Sill: National Landscape Discovery Centre at Once Brewed was one of two schemes out of 240 nationwide to be awarded the prestigious Selwyn Goldsmith Award for Universal Design.

Aerial photo showing the extensive site at Preston





*The existing facilities at Dick White Referrals in use*

## DESIGNING FOR VETS AND PETS

The UK is a nation of pet lovers but the sheer number of pets in the UK may actually come as a surprise! The 2018 PDSA Animal Wellbeing Report (PAW) estimates the number of domestic rabbits at 1 million, dogs at 8.9 million with a whopping 11.1 million cats – around 25% of the UK population have a cat with another 24% owning a dog, all of which represents an enormous market for the country’s 20,000 veterinarians who are split between just under 4,000 different veterinary enterprises. In 2017, UK households spent over £4bn on veterinary and other pet services.

All of which is some background for a JDDK specialty over recent years which has been the design of both veterinary surgeries, or first opinion practices as they are now known, and larger veterinary referral hospitals.

JDDK Director, Nicky Watson, explained, “Our first referral hospital was in 2014 for Wear Referrals at Bradbury just outside Sedgfield. The hospital was a new-build 1,600 sq m centre of excellence, equipped with the very latest state-of-the-art facilities for specialist animal care including MRI and CT scanners, four operating theatres, a chemotherapy and rehabilitation ward, dedicated intensive care unit and staff training facilities.

*Exterior of the new Vets4Pets first opinion surgery at Washington*



*The existing buildings at Wear Referrals on the left, with a CGI of the proposed next phase of development on the right*



“Since then, we have gone on to work for other veterinary organisations such as Vets4Pets and Dick White Referrals all over the country whilst also just completing proposals for a next phase of development for Wear Referrals which will on completion more than double the size of the existing facility and make it one of the largest veterinary centres in the UK.

“Whilst each project has its own challenges and solutions, there are a number of generic design principles to consider on such projects. Each surgery or hospital needs clearly defined circulation routes and spatial arrangements that separate the public spaces from consultation areas, where public access is required, and the diagnostic and treatment areas which are strictly for veterinary staff only.

“There’s also the need to separate cats and dogs as much as possible as the presence of each will stress the other breed, having a negative impact on the animals’ health and welfare. Cats are particularly affected by stress and distress and they are territorial and need visually separating from each other as much as possible as well. We are experienced in

designing for a Cat Friendly Clinic Gold Standard, including incorporating climbing shelves in consultation rooms and ways of keeping cats at higher levels at reception desks and waiting rooms.



*A welcoming reception area helps reduce stress in clients and their pets*

“Each facility requires a welcoming reception area where clients and their pets can be seen quickly. We always endeavour to design these spaces in a way that reduces a pet owner’s stress levels, ideally making them south facing so they benefit from sun light, with views to a landscaped setting and with choices of spaces to sit and wait– as commercial enterprises, the design also needs to ensure that the reception area doubles as payment areas once treatment is finished.

"The referral hospitals in particular are superbly equipped with a recent project in Cambridge for Dick White Referrals having not only X-Ray, Ultrasound, MRI and CT scanning equipment but also a Linear Accelerator for radiotherapy treatments.



Diagnostic technology

"The diagnostic and treatment areas are just as heavily serviced facilities as they are in human hospitals with designs having to consider general health requirements such as infection control, siting ultrasound suites in quiet areas and facilitating the efficient access and flow of veterinary staff. Whilst there are no set standards for animal treatment areas, we tend to use the existing HTM (Health Technical Memorandum) for human health treatment facilities as a basis, but each project is different.

"Extensive laboratories are included in some referral hospitals as well as specialist treatment suites such as physiotherapy, often with aqua-therapy facilities whilst, in addition to the public, consultation and treatment areas, the designs are often required to incorporate separately accessed training facilities for CPD purposes.



Interior of the new Vets4Pets first opinion surgery at Washington



The Intensive Care Unit at Wear Referrals just before it opened its doors to patients

Plenty of daylight and views out from non-clinical areas are important for reducing stress and supporting wellbeing



"The clinical areas in veterinary facilities can be noisy and busy environments to work in, often with limited natural light and so the design of staff areas needs as much attention as the clinical spaces do in order to support wellbeing in the workplace. Natural light and views out of the building are key as well as providing smaller quieter spaces to rest in as well as the more communal ones."

Nicky Watson concluded, "The range of different veterinary facilities we work on is demonstrated by the fact that we've recently had the conversion of a bungalow in Washington into a first opinion surgery complete on site; we have just completed the design of a major internal fit-out of what was previously a large out-of-town office facility into a referral hospital; our

extension to a first opinion surgery in Barnsley is currently being priced by contractors; and the fit-out of a new build 3,800 sq m extension to Dick White Referrals in Cambridge, which is already one of the largest specialist veterinary centres in Europe. All of these projects are very varied however by using our experience of the sector, we are producing bespoke facilities informed by well-considered common design principles."

"Working with JDDK has been made much easier because of their experience in the veterinary sector.

"For us, one of the most important elements of our relationship has been their understanding of the very specific requirements of a world class referral centre.

"We offer outstanding veterinary services and it is important that these are reflected by the standard of our facilities and I have no doubt that our new building will be exceptional."

**Rob Foale**  
BSc BVetMed DSAM DipECVIM-CA MRCVS  
Clinical Director, Dick White Referrals

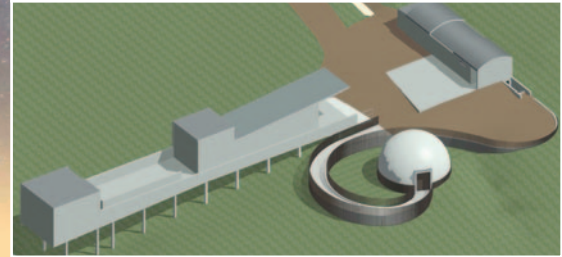


# PLANNING PERMISSION FOR KIELDER PLANETARIUM

The planetarium will be located next to the existing Kielder Observatory upon Black Fell in Northumberland.



The design for a 7m diameter planetarium dome at Kielder Observatory.



In December, we secured planning permission from Northumberland County Council on behalf of Kielder Observatory for the construction of a planetarium as a further astronomical attraction to the increasingly popular Northumbrian scientific and tourist destination.

Located just a few miles from the Scottish border high upon Black Fell under some of the darkest skies in Europe and the third largest protected Dark Sky reserve in the world, Kielder Observatory is a public outreach astronomical facility which now hosts over 40 events a month rather than the few dozen that were originally envisaged at its opening in 2008.

In response to the huge demand and interest, a second smaller observatory has recently been opened with the proposed planetarium designed to further widen the facility's offer to daytime activities or on cloudy, poor visibility nights.

JDDK Principal Architect, Alison Thornton-Sykes, explained the design, "The proposal is for a 7m diameter structure set down in the landscape on a 1.1m plinth so that the peak of the dome appears at the same height as the adjacent observatory. The circular form of the domed roof acts as a foil to the linear form of the two observatories with the curved form continuing to define a curved viewing platform. The balustrading and cladding in scorched larch timber contrast further with the observatories while still utilising the same material.

"The Planetarium and the two observatories are set around a central 'Village Square' to create a real sense of place for the whole attraction whilst the external landscaping will be retained as a natural setting. The retaining wall around the planetarium creates a moat effect while also defining a supervised gathering external space for groups waiting to enter the planetarium.

John Holmes, Kielder Observatory, added,

*"It's been great to be working with JDDK again as I have commissioned them on a number of occasions during my career particularly at Durham Cathedral and the company always offer highly imaginative and attractive solutions and are always prepared to go the extra mile for their clients whatever the size and scale of the developments. We are looking forward to securing funds for the planetarium which would be a very valuable asset to our range of facilities particularly in relation to our expanding educational programme."*

"It's good to come back up to work at Kielder following our work in 2012 for the Calvert Trust here for a Visitor Centre, whilst our design for the award winning The Sill Landscape Discovery Centre down the road at Once Brewed for Northumberland National Park Authority, included an Observation Deck specifically for star gazing."

## RIBA NORTH EAST HOUSING GROUP

The future of the housing sector is a challenge that affects not only architects but a variety of other professions and, indeed, all of us as residents.

This was the premise recognised by Alison Thornton-Sykes and Clair Sanders as Co-Chairs of the inaugural RIBA North East Housing Group.

Clair explained, "In essence, it's an initiative by RIBA North East to bring together housing professionals to pool knowledge and experience so that we can all better address housing challenges in the North East.

"It's initially a working group with representatives from varying fields of expertise including developers, RSL's, planners and regeneration experts with a common aim of wishing to create places where people WANT to live.



The RIBA North East Housing Group meeting at Millmount

"We want to create great housing in the region by understanding the latest research and themes, seeing what has worked (and what hasn't) in other areas and act as a resource of pooled expertise."

The Group has so far set their future agenda, with a presentation on 'Health, Wellbeing and Housing the Ageing Population' and have arranged to visit

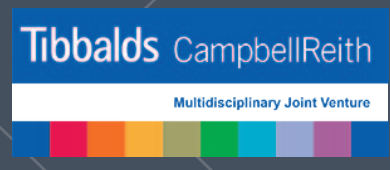
the Gateshead Innovation Village to see examples of Modern Methods of Construction.

Clair continued, "We intend to hold a conference at the end of the year to discuss our findings and hope this will inspire others to take the Group on to continue the conversations on North East housing."



An elevation of the proposed houses at the former Electrolux site in Spennymoor

# TIBBALDS CAMPBELLREITH JOINT VENTURE RE-APPOINTMENT



We're delighted to be part of the Tibbalds CampbellReith Joint Venture which has been re-appointed for three years to the Homes England Multidisciplinary Framework which is set up to increase the pace, scale and quality of residential developments and accelerate the delivery of new homes in areas of greatest demand.

The JV manages large, complex regeneration and development projects with a wide range of sub-consultants covering the diverse disciplines

required, such as planning, architecture and landscape architecture, engineering, transport, ecology and sustainability.

One of our first projects with the JV was the preparation and submission of the Reserved Matters planning application for the former Electrolux site in Spennymoor which, in essence, extends the original Planning Permission granted by Durham County Council.

Associate Clair Sanders, explained. "The site,

which had outline planning permission for a residential development, is now owned by Homes England, for whom we have developed a more detailed scheme with high quality houses for the first phase of development. This 'Reserved Matters' keeps the planning permission alive whilst also adding value to the consented scheme."

Work is now focusing on the delivery of the remediation, utilities and infrastructure before a housing developer is appointed..

## AFFORDABLE HOMES IN BLAKELAW

In September, the first residents moved into Karbon Homes' new £2m development of 18 homes on Springfield Road in Blakelaw.

Our design had transformed the 0.5 hectare site, located just off Ponteland Road in the North West of Newcastle (and just a few minutes from our office!) and previously occupied by a former Children's Services office with hardstanding car park, into an attractive residential development of 18 new homes with a mix of private gardens and public open space. The homes consist of eight, two bedroom apartments, eight, two bedroom bungalows and two, one bedroom bungalows.

The new homes, brick built to match neighbouring buildings, are set out to create a high quality, secure built environment with a clearly defined hierarchy of public and private spaces as well as a series of individual "character places" throughout, creating a development with a strong sense of place and one that sits comfortably within its setting.

The site layout avoids north facing private gardens and avoids development on the line of

the proposed sewer easement. The apartments have each been allocated a private garden area, just as the bungalows have.

Two of the scheme's first residents are Tommy and Jean Bell who moved into a new bungalow from the family home on the West Road, where they lived for an incredible 59 years and raised all six of their children. Their son Keith explained how the couple were no longer able to live properly together, as Tommy could not climb stairs, and even going out was a challenge, with 14 steps from street to front door.

Tommy said: "We love the bungalow. It's beautiful. The walk in shower is really good, and everything being on the flat. I had trouble doing a lot of things in the old house, as there were a lot of stairs, and we only had a shower over the bath. We couldn't carry on there."

Now the couple have moved to Sheriff Gardens, they can live together - and can even manage to walk a short distance to catch a bus into town.

Karbon Homes' new bungalows and apartments at Blakelaw



## NEW HOSPICE WORK

We're delighted to be able to announce our appointment for architectural services by two new clients providing Palliative Care to their local communities.

St Cuthbert's Hospice have provided services to the Durham community since 1988 at Park House, on the outskirts of the City.

Originally offering solely day care services, the Hospice opened a In-Patient Unit in 2006, followed by a new Day Care Centre in 2017.



Martin House at Boston Spa, outside Wetherby, offers palliative care for children and young people with life-shortening conditions.

The hospice was formally opened in 1987 as only the second purpose built children's hospice in the UK. Currently the hospice has nine bedrooms in the main house, where parents are welcome to stay with their child, and six bedrooms in the teenage and young adult unit which provides more independence for those age 13 and over.



# BACK IN THE SADDLE

Aficionados of Millmount News, may recall JDDK Associate Director, Matt Holmes' Land's End to John O'Groats cycle marathon featured in the Autumn 2017 issue.

He's gone a bit further this time...

Starting from Hanoi in Vietnam in mid-December, Matt and his trusty second hand bike took the bus North to the Chinese border to start a 2,700km ride west into Laos, then south down through Laos into Cambodia and on into Thailand finishing in Bangkok 32 days later.

With every day came new sites and new adventures, as he explained, "The route, which at times followed the Ho



Matt's trusty steed at Angkor Wat

Chi Minh trail was way off the normal tourist track so the people were surprised to see a Westerner and one on a bike at that! Everyone I met was so friendly and I was invited into private homes and even had a free meal once in a restaurant, and I did offer to pay several times! The landscape is spectacular, particularly along the Vietnam-China border whilst the temples at Angkor Wat, which were built around the 12th Century and only rediscovered in the 1920's, were just incredible.

"I had a scary night coming down a mountain track in complete darkness and really didn't think I'd make it off the mountain but was fortunately rescued by a passing Jeep and dropped at the door of my guest house! The bike held up fantastically and I didn't have any mechanical issues, until I was cycling home from Newcastle Station when I had my one and only puncture!"



Matt Holmes and young fans in Cambodia.

## CONGRATULATIONS...

...to Tristan and Colette Cooper on the birth of their son, Arthur. Born on 3rd January at Newcastle's RVI at a healthy 8lbs – Tristan and Colette would like to thank all the RVI staff for the fantastic service..



Colette, Tristan and Arthur Cooper

## GOODBYE TO ANGIE

On June 28th we will say goodbye to our Office Manager, Angela Cowens, when she retires.

Angie joined the practice in 1987 when it was housed in two rooms with three drawing boards and a typewriter in Milburn House after responding to "the tiniest advert in the world" for a Girl Friday for a new architectural practice.

"I worked just for Jane (Darbyshire), Keith (Wynne) and Tony (Reynolds) in those early years but that was when the whole ethos of the practice developed and it's still the same now with hands-on Directors and everyone pulling together as a team. It's been wonderful seeing how the younger members of staff have developed and grown within the practice and I've loved my 32 years here. I think the lift-off for the practice came when we were chosen by Marie Curie for their new hospice in Newcastle – we worked for St Oswalds already but here was a major national organisation and I can still remember the day we won their first work."

Angie leaves us to join her husband, George, in enjoying

retirement in their home in Durham and more special times with her grandchildren Zachary and Annabel.

Angie concluded, "We've no definite plans but looking forward to spending more time with the family and great friends and being able to take ourselves off on holidays when we like! I've already signed up as a dog-walker, but it's mainly the flexibility of each day that I'm going to enjoy and I definitely won't miss the daily drive from Durham to Newcastle!"

Good luck in all you do and so many thanks for all your hard work and support over these many years from your JDDK family!



Angie with grandchildren, Zachary (4) and Annabel (8)

## PEOPLE'S PASSIONS

### OLIE HOPWOOD - LIFE'S A CLIMB BUT THE VIEW IS GREAT

I grew up in Staffordshire and just one visit to the local climbing wall with the Scouts had me hooked on the sport with frequent trips to the Roaches, a local crag, but lack of time, and cash, meant climbing was a very small part of my life until I finished my degree in 2015.

Since then, however, it's become increasingly important to me and I'm fortunate that my girlfriend, Katy, is also a keen climber, although I think it's fair to say that we're both fair weather climbers and prefer traditional climbing and bouldering to the Winter sport which needs additional special equipment.

The recent 'Free Solo' film (about Alex Honnold's incredible solo rope-free climb of El Capitan in Yosemite National Park) has certainly raised the sport's profile and I've been lucky enough myself to rock climb in California which was probably my best climbing so far, apart from standing on a wasp's nest, but we also spent a great few weeks climbing in Spain over Christmas 2017.

It's a very social sport and I've made some great friends, especially up here in Newcastle where we use the Valley Climbing Wall in the Ouseburn and have frequent trips to Shaftoe Crag near Belford.

As to why, well, apart from the adrenaline during, and sense of achievement after a climb, I think it's the problem solving of climbing that appeals to me – learning new skills, racking up gear, managing risk and making high-pressure decisions during an ascent – it's often as much of a mental challenge as a physical one.



Olie Hopwood Climbing in California

## JDDK DISCOVER DESIGN DELIVER

jddk.co.uk

t. 0191 286 0811

e. millmount@jddk.co.uk

JDDK Architects

Millmount, Ponteland Road

Newcastle upon Tyne NE5 3AL

GDPR Compliance

You may opt to unsubscribe or subscribe to a variety of communications from us (including future issues of Millmount News) at our preferences page - [www.jddk.co.uk/jddk-preference-centre/](http://www.jddk.co.uk/jddk-preference-centre/)