

# MILLMOUNT NEWS SPRING 2017



THE OLD POST OFFICE | NBS





JDDK's Highland Hospice in Inverness.

## ROYAL APPROVAL FOR HIGHLAND HOSPICE

The £7.5m refurbishment of Inverness' Highland Hospice was officially opened by HRH The Earl of Inverness (Prince Andrew) on Tuesday 13 December.

The project had begun in 2011 with an initial commission for JDDK to undertake a Feasibility Study to explore options to upgrade the hospice's 25 year old facilities, particularly the Inpatient Unit, in light of the development of hospice services, increasing regulatory recommendations and the aspirations of the Highland Hospice for the creation of the very best care environment.

JDDK Associate Director, Nicky Hodgson, explained, "The hospice has the most superb riverside location and a key factor was the desire to stay here taking advantage of those parts of the hospice which were working well and the familiar public face of the hospice centred on Ness House. The chosen option was therefore to demolish the existing small Inpatient Unit and temporarily move whilst the new unit was constructed."

Nicky Hodgson continued, "With nine single en-suite rooms and one three-bedded room, the new Unit offers greater choice and vastly improved privacy and dignity for patients. All the single rooms are now large enough for a family member to stay overnight with their loved one if desired, and the facility provides additional much needed family accommodation enabling friends and relations to relax during the day and stay overnight if they wish."

"Work spaces for clinical staff have also been greatly improved, meeting modern healthcare specifications. The facility also provides dedicated bereavement support rooms for face-to-face, group and telephone counseling for the first time since the service was launched in 1994, as well as a unique Sanctuary for patients, relatives, staff and volunteers to take respite from the challenges they face."

An enlarged art and craft room offers improved Occupational Therapy opportunities, and there is also a bigger suite for physiotherapy. Additionally, there is the space and technological infrastructure needed to support the growth of a Virtual Hospice allowing greater access to Hospice services in more remote and rural communities of the Highlands.

Hospice Chairman, Norman MacDonald, commented:

*"With the support of the Highland public we have achieved our £4.5million fundraising target and delivered a building offering a welcoming and calming environment with all the features a modern care facility needs. We are proud of what we have been able to provide for the people of the Highlands and I am delighted that the Earl of Inverness was also impressed."*



The old meets the new in the double height hospice reception area.



One of the new bedrooms with access to gardens and views over the River Dee.



The extended teenage den at Robin House.

## REFURBISHMENT FOR ROBIN HOUSE

On September 23rd, Glasgow-based contractors, Thomas Johnstone Ltd, handed back the third and final phase of our £1.1m refurbishment of Robin House Hospice to the Children's Hospice Association of Scotland (CHAS).

Situated just outside the picturesque village of Balloch at the southern tip of Loch Lomond, Robin House is one of just two dedicated children's hospices in Scotland.

Although completed in just 2005, the charity had already identified several aspects of the original design which were judged no longer fit for purpose.

Project Architect, Sam Dixon, commented, "Our scheme is basically about making better use of the available space with reconfiguring areas such as the art & activity rooms, reception and first floor offices, as well as building a new remote garden room with

a new bridge to link it to the main building, and extending the 'Teenage Den' leisure area. Because this is a live site with patients, staff and families circulating, we had to organise the work into three phases but the end result is a very much improved facility for a relatively modest budget."



*Dedicated Activity and Arts and Crafts spaces have been created out of previously underused space.*



## PLANNING APPROVAL FOR SHERWOOD FOREST VISITOR CENTRE



The proposed Sherwood Forest Visitor Centre.

Following a number of consultation exercises, we have secured planning permission from Newark and Sherwood District Council, for the £5.3m Sherwood Forest Visitor Centre on behalf of their clients, an RSPB-led consortium which includes the RSPB, the Sherwood Forest Trust, Continuum Attractions and Thoresby Estate.

JDDK had been selected as architects for the project following previous projects for the RSPB, most prominently at the award-winning Saltholme Wildlife Reserve and Discovery Park Visitor Centre in 2009.

The planning application is both for the external masterplan which divides the site into two separate areas, one for the actual visitor centre and service area and the other for the main

visitor car and coach park, partially as a result of the RSPB's intention that physical access to the site and all its opportunities should be available to as many people as possible.

In essence, the design proposes an iconic building knitted into the existing community at Forest Corner so that almost a village square is formed between the new building and the existing cricket club, YHA hostel and the Arts & Crafts Centre.

The actual centre is a 558sq metre split level structure designed to lead visitors into Sherwood Forest as Principal Architect, Alison Thornton-Sykes, explained, "One of the main features of the Centre is its curved, twisted form, created by staggered roof beams, which reflect the forest environment and

Ross Frazer, RSPB Project Manager, commented:

*"We're absolutely delighted to have been granted planning permission to build this fantastic new visitor centre at Sherwood Forest. Prior to our application we took on board a lot of feedback from the local community, and hope that they are just as excited as we are to be one step closer to bringing that vision to life."*

the "Trees that sheltered him" concept of Robin Hood. There are several different elements to this from creating an initial welcoming area for visitors with toilets, retail and recreation facilities to creating wilderness zones to give visitors a real sense of the ancient forest environment. Indeed, one of the most popular attractions of the whole area is the magnificent Major Oak, the approximately 1,000 year old oak tree where the Merry Men outlaw band supposedly slept."

"The linear format pulls visitors through and down the 5m level change into the double height café space and out to the exterior amphitheatre sheltered by the overhanging canopy, an integral part of the roof."



The £5.8m refurbishment and redevelopment of the Old Post Office is the latest project in JDDK's growing portfolio of office schemes.

- 2017 Refurbishment of Northumbria House Offices, Durham Rivergreen Developments
- 2015 Stannington Managed Office Space Rivergreen Developments
- 2014 Old Post Office, Newcastle, NBS
- 2014 Head Quarters Offices, Durham Rivergreen Developments
- 2009 Gustharts, Milkhope Centre, Blagdon Blagdon Estates
- 2008 Age Concern Offices, Ashington Age Concern
- 2007 Co-op Building, Amble Amble Development Trust
- 2007 Horton Park, Blagdon Blagdon Estates
- 2006 Rivergreen Centre, Durham Rivergreen Developments
- 2005 Queen's Meadow Business Park, Hartlepool, Rivergreen Estates
- 2004 Fourways, Amble Amble Development Trust
- 2004 Apex Business Village, Phases 2 & 3 Partnership Projects
- 2004 Rivergreen Industry Centre, Pallion Rivergreen Developments
- 2002 Northumbria House Offices, Durham Rivergreen Developments
- 2001 Northern Rock Foundation Offices, Gosforth, Northern Rock
- 2001 The Old Coach House, Durham Durham Associates
- 2001 Telehouses, London, Dublin, Amsterdam, Stockholm, Rivergreen Developments
- 2000 Co-op Building, Widdrington Grainger Trust
- 1999 Aykley Heads Business Centre Rivergreen Developments
- 1999 Belmont Offices, Durham Blackett, Hart & Pratt
- 1998 Aykley Heads House, Durham Rivergreen Developments
- 1997 New premises at Metro Park Gateshead, Smiths Print
- 1996 Wylam Wharf, Sunderland Rivergreen Developments
- 1995 Offices at Saville Street, North Shields North Tyneside City Challenge
- 1992 Roseline Building, Sunderland Rivergreen Developments
- 1991 Offices at Howard Street, North Shields North Tyneside City Challenge
- 1989 Milburn House, Newcastle Milburn Estates



Looking across the open-plan office within the former sorting office.

## THE OLD POST OFFICE RE-OPENS FOR BUSINESS

The £5.8m refurbishment of the Old Post Office on St Nicholas Street in the centre of Newcastle for our clients, NBS, was officially opened in January.

Originally constructed in the 1870's, the building became a major employer and focal point of the City handling parcels, letters and packets and facilitating money orders and telegrams before closing in 1999 as a result of Royal Mail restructuring and being split up into a variety of office uses.

The client's vision was to create a place at the forefront of the new digital economy. The design team set out to deliver a working atmosphere to excite and motivate staff, helping to attract and retain high-quality recruits. Although NBS had occupied the Old Post Office for a number of years, the building was subdivided into small tenancies leaving the business fragmented. A key objective was to improve connectivity, creating an environment to support teams working together across functional boundaries.

NBS are committed to the long term stewardship of the Old Post Office and used this project as an opportunity to maximise the potential of this heritage asset. At an early stage in the design process, JDDK prepared a heritage statement, assessed the building as having regional significance, and were delighted to discover record drawings in the Tyne and Wear Archive.

Our design has returned the Grade II listed building to its original unified state creating space for NBS's 210 staff who have been brought together across two main floors. The state-of-the-art building now contains some 3,500m<sup>2</sup> of offices, meeting rooms and extensive staff facilities for NBS staff. There are also exhibition, lecture and event spaces in which NBS will host industry events.



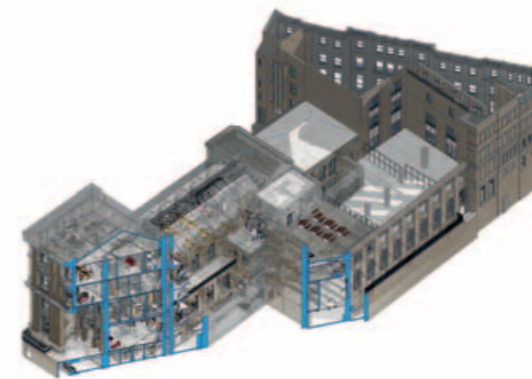
The grand classical façade facing St Nicholas' Cathedral

The client stipulated that the project should be a technology exemplar in the use of Building Information Modelling (BIM), one of the areas where the client is leading the way in the construction sector. Starting with the employer's information requirements, the design team worked collaboratively in Revit within a common data environment, and concluded with the issue of facilities management information. To enable this process in such a complex historic building, the client procured a detailed laser survey and BIM model of the entire building which provided the foundation for design work and procurement.



Offices on the first floor under the original iron roof trusses.

The scheme was delivered to BIM Level 2, using Revit and NBS Create.

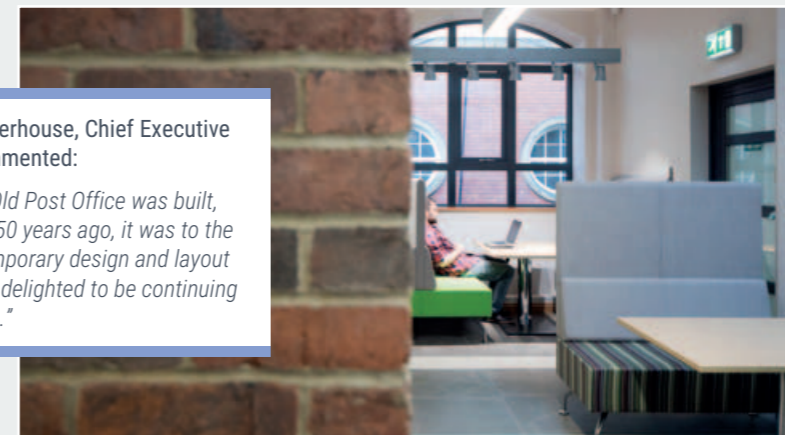


Visiting the Post Office last year, Jane Duncan, President of the Royal Institute of British Architects (RIBA), hailed the project, as "...a wonderful addition to the professional community and the wider community who are interested in architecture."

She added, "It is always difficult to create a state-of-the-art space while maintaining the character of the building. NBS and their architects, JDDK, have not only achieved this but have also worked with partners from the North East to support regional contact."

Richard Waterhouse, Chief Executive of NBS, commented:

"When The Old Post Office was built, more than 150 years ago, it was to the most contemporary design and layout - and we are delighted to be continuing this tradition."



### STOP PRESS

The Old Post Office development has been shortlisted in the North East regional sections of the RIBA, RICS and LABC Awards.

Northern Region Winner in the Refurbished/Recycled Office Space category of the British Council for Offices Awards.

Shortlisted in the Preservation and Rejuvenation category of the CENE (Constructing Excellence North East) Awards.



The roof garden and café hub beyond.

Project architect, Adam Vaughan, commented:

"It's been a fascinating project which involves taking a listed historical building and altering the internal spaces so it's more suitable for modern use, whilst retaining the external fabric wherever possible. It's also a very high profile contract which will be minutely examined by its end users who are, in essence, fellow architects, so we had to be right on our game!"



## POST OCCUPANCY RESEARCH

Following on from the article on Hospice Research in the Autumn 2016 issue of Millmount News, the project has progressed considerably as JDDK Director, Mura Mullan, explains, "Since September, we've completed our visits to 12 JDDK-designed hospices (we've been involved in 40 so far) and have interviewed key members of staff at each, amassing some 50 hours of recorded interviews which we're now transcribing."

"Alongside these interviews, Northumbria University has been examining existing healthcare evaluation tools and whether they can be applied to hospices and how they can be improved. We're hoping to bring everything together this Autumn and are continuing to be involved in research by participating in a variety of events and publications."

### These include:

- Hospice UK in November 2016 - we exhibited and received a huge amount of interest in the research project.
- BMJ (British Medical Journal) Supportive and Palliative Care - we're currently producing an article which outlines the development of modern hospice design.
- Professional Practices in the Built Environment Conference - in April we will attend the conference at the University of Reading to present our approach to hospice evaluation.
- European Healthcare Design (EHD) 2017 - later in June our research will be featured at the EHD Congress and Exhibition at the Royal College of Physicians in London.

It's an exciting time and our research has allowed us to amass a wealth of knowledge alongside an in-depth understanding of the palliative care sector that will undoubtedly enrich not only our own design solutions, but add to the general knowledge and skills resource which is required to address future end of life care.

## THE SILL GETS READY FOR OPENING

Construction at The Sill, our £14.8m National Landscape Discovery Centre at Once Brewed in Northumberland, is nearing completion in anticipation of the official opening later this Summer. Situated in the Hadrian's Wall area of Northumberland National Park, the Sill visitor centre and youth hostel is the result of an innovative partnership between Northumberland National Park, YHA and

the Heritage Lottery Fund (HLF), thanks to money raised by National Lottery players.

Once the builders move out, there's still a lengthy period of internal fit out before the facility opens to the public with state-of-the-art exhibitions exploring the landscape, geology, wildlife history and heritage of the area. The photo shows the build in early March.



## PLANNING PERMISSION FOR DEE VIEW



A CGI of the new extension.

In March, we secured planning permission on behalf of the Sue Ryder Neurological Centre at Dee View Court in the Kincorth area of Aberdeen for a £4m new build wing and extension.

Dee View Court, opened in 2003, is Scotland's only purpose-built neurological centre providing care and support for residential patients and temporary respite and outreach support for others with degenerative life-changing conditions affecting the brain and nervous system. However, with only 20 residential spaces in single rooms and a

waiting list of over half that number, Sue Ryder were keen to develop the existing site, where they had close contact with the local community, by extending their facility to increase the number of rooms.

The new building will contain six high dependency en-suite bedrooms on the ground floor with a further six supported living units on the first floor, allowing independent living for residents but with the security of support from the centre if required. Large patio doors will be provided in each ground floor bedroom to create light airy spaces with a connection to the outside.



**Sam Dixon, commented:** "With Sue Ryder staff, we held public consultations in June 2015 to gain local opinion and again in November 2016 to seek comments on the scheme. The overall consensus was very positive and we're delighted that the application has been successful. This will now be followed by a considerable period of further consultation and fund raising before construction can start."

## GOODBYE TO KATE



The success of projects such as St Gemma's Hospice in Leeds (right) and Thorpe Hall Hospice in Peterborough (above) has been in no small part due to Kate's superb landscape designs.

Goodbye to our resident Landscape Architect, Kate Bridger who retired on March 31st. Kate joined the practice in 1993 bringing important landscape expertise to the practice's projects across all sectors whilst her experience in housing and healthcare particularly, has been an incredible asset.

Kate commented, "JDDK has always placed great value on landscaping, involving me at the design concept rather than as an afterthought. I have seen many changes since I started, arriving with a collection of Rotring pens,

pencils and a scale rule, now everything is done in CAD. Similarly, the style of design has changed; the practice at that time was very much Arts and Crafts project based and my landscape schemes matched, but the changes in the intervening 24 years have been incredible, both to the sectors we work in and the projects themselves - in landscaping terms, the style is now more modernist and even minimalist like the Swedish landscape Architect, Ulf Nordfjell-type projects."

"We've produced some incredible work over the years but the sheltered courtyards we

produced in the walled garden at Thorpe Hall Hospice at Peterborough for Sue Ryder is probably my favourite scheme as Ian Clarke and I worked so closely together for a client who really valued the external landscaping."

Kate intends to carry on looking after herself by keeping both mind and body active, with more yoga, Pilates and swimming and rekindling her long forgotten knowledge of Spanish. This should be beneficial when pursuing her interest in art and travel, with trips planned to Europe and beyond. We wish her well and look forward to her frequent returns.

Kate commented,

"What hasn't changed, however, has been the friendships and very strong family atmosphere at JDDK and it's going to be this I miss the most."



Kate Bridger

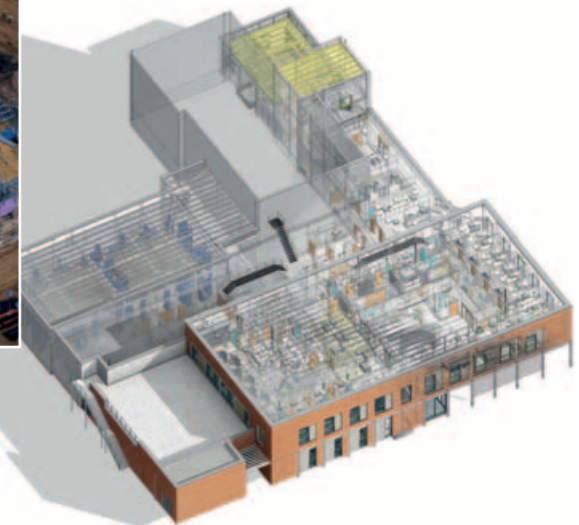
## Proton Beam Therapy Update

Our proton beam therapy scheme for Proton Partners International (PPI) continues at Bomarsund and is due to open in 2018. Enabling works have started on site at Reading where London-based contractor, Graham Construction has embarked on the 12 month build programme. In addition we hope to have our Planning Application for a third centre at Liverpool completed for early May with similar schemes across the country still under consideration.

In February, PPI announced that that the state-of-the-art Cancer Centres would be named after the New Zealand born physicist, Sir Ernest Rutherford, who first identified the proton particle in 1911.



The Rutherford Cancer Centre at Bomarsund.



A BIM generated image of the Reading facility.

## OFFICIAL OPENING FOR ACORN HOUSE

On 30th March our Acorn House development in Thornaby for clients, Thirteen Group, was officially opened by Councillor Ken Dixon, the Mayor of Stockton-On-Tees.

The scheme has replaced the previous care home with a cluster of accommodation designed specifically for tenants with learning difficulties and containing a hub of communal facilities, 15 one bedroom supported apartments and 13 two bedroom bungalows which offer residents varying degrees of independence.

Constructed by Keepmoat Developments, the accommodation at Acorn House has been designed with not only the residents' needs and security in mind but also to fit in with the neighbouring two storey buildings.

JDDK Director, Kevin Turnbull, commented, "It was crucial that our design not only promoted the residents' safety and ability to integrate with each other and the wider community, but also that the scale, massing and location was sympathetic to the adjacent existing development. The shared communal spaces promote interaction with the shared garden acting as a focal point for all residents."

The buildings have also been designed to ensure that the layouts are fully accessible and adaptable to changing needs and conform to all relevant standards, including Building for Life, Wheelchair Design Guide, CFSH (Code for Sustainable Homes) pre-assessment, Lifetime Homes and BREEAM for which a Very Good assessment is expected.

A CGI of Acorn House.



**Ian Wardle, chief executive at Thirteen, commented:**

"Acorn House is a fantastic scheme which provides high quality, modern homes that meet the needs of residents who benefit from its specialist features. Our residents can now lead independent lives while receiving the additional support they need to be an integral part of their community."



## JDDK WOMBLING FREE



The JDDK Clean Up gang tackle the underpass.

Friday, 3rd of March saw us taking part in the Great British Spring Clean - a charitable initiative to bring together people from across the country to clean up the litter that blights their neighbourhood. Led by Adam and Romanda, our gallant volunteers worked their way up Ponteland Road from the Newcastle United

Golf Club, past the take-outs and offices and down into the Cowgate underpass.

Supplied with litter pickers by Joe Hogan, Community Officer with Newcastle City Council, we collected a dozen or so full sacks of rubbish and met many of the local residents who voiced their approval.

## PEOPLE'S PASSIONS CHUN KIT YUEN'S FOOD FOR THOUGHT

I love eating, as everyone knows - I talk about food and cooking and love them both - to me there's nothing finer in life than good food - it doesn't have to be fancy, it doesn't even have to look too fancy, it just has to taste great.

I think it must have been my parents who instilled in me this love of food - mainly traditional Chinese family dishes but we held big parties for special events like New Year and I always loved the process of cooking almost as much as the smells and tastes of the finished dishes.

My favourite dish would be a paella cooked in a Barcelona restaurant whose name I forget - the whole atmosphere waiting for the meal to be cooked was great whilst the actual dish was superb. Beyond that, the next favourite's probably steak like many people but it's a good example of how important cooking technique is - you have to get the basics right from boiling an egg to frying the perfect steak! The dish I love to cook is a classic Cantonese dish from Hong Kong, Baked Pork Chop Rice - it sounds easy but you have to get perfect fried rice with perfectly prepared pork before you bake the two together - not so easy as it might sound!

We're lucky that there's great food shops and restaurants in Newcastle - we're spoilt for choice, but, although I love food from all the world, I think my current favourite would be a new Chinese restaurant, Amaysia, which recently opened on Stowell Street - again, great atmosphere and great food.

## CONGRATULATIONS...

...to ourselves for being shortlisted in the Architectural Practice of the Year category of the inaugural North East Property Awards. Winners will be decided on May 4.



...to Romanda Jobson, for her Outstanding Achievement Award in recognition of her services to vocational education for her cadets in the Northumbria Army Cadet Force. The award was presented at the Royal Military Academy, Sandhurst, by the Rt Hon Lord Lingfield, Chairman of Trustees at CVQO, the education charity working youth organisations.



Romanda commented, "It was such an honour and proud moment - an experience I will treasure for a long time."

Staff Sergeant Instructor Romanda Jobson receives her award.

...to Nicky Watson who has been made a Visiting Fellow of Northumbria University.



Nicky Watson

...to Clair and Nathan Sanders, on the birth of their son, Noah, at 18.48 on December 1st at a healthy 6lb 13ozs.



Nathan, Noah & Clair Sanders

...to Adam Vaughan, for his blog, Tracing Green, being shortlisted for the UK Blog Awards



Adam's Tracing Green Home page



Sam Dixon

...to Sam Dixon, on completing her RIBA Conservation course and becoming a Conservation Registrant on the RIBA Register.



Here's one I did earlier - Chun's Baked Pork Chop

## JDDK DISCOVER DESIGN DELIVER

jddk.co.uk

t. 0191 286 0811

e. millmount@jddk.co.uk

JDDK Architects

Millmount, Ponteland Road

Newcastle upon Tyne NE5 3AL