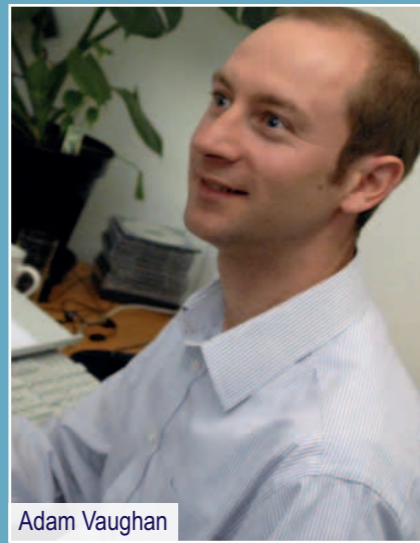


New Director for JDDK

We're delighted to announce the appointment of Adam Vaughan as Director of the practice. Adam, who was previously an Associate, returned to his native Newcastle to join JDDK in 2005 after completing his first degree in 1995. He received his Diploma in 1998 and extended his dissertation to gain an MA. His work has been in a number of development sectors whilst his particular interest in environmentally sustainable architecture has flourished and he now runs the www.tracinggreen.uk blog.

JDDK Director, Kevin Turnbull, commented, "Nicky, Mura and I are delighted to have Adam join us as a Director of JDDK. Our clients as well as the team here will benefit from the considerable skills, experience and enthusiasm that he will bring to the role."



Adam Vaughan

Awards Update

Two of our projects have been shortlisted in the RICS North East Renaissance Awards 2016 with the Sue Ryder Hospice at Thorpe Hall on the Western edge of Peterborough, already 'Highly Commended' in the Building Better Healthcare Awards, shortlisted for a RIBA East Award.

The RICS projects are the new veterinary referral and emergency hospital for Wear Referrals at Bradbury outside Sedgfield, which gains a place on the shortlist in the Design through Innovation category, whilst our housing scheme at Adler Close in Gateshead has also been recognised in the Residential category.

Our housing developments at Claremont Park in Hartlepool for thirteen Group and The Elms at Chester-le-Street for Cestria Housing (see centre spread) have also been shortlisted in the Constructing Excellence in the North East (CENE) awards.



Sue Ryder Hospice at Thorpe Hall



The Elms in Chester-le-Street



Wear Referral's Veterinary Hospital at Bradbury



Adler Close in Gateshead

People's Passions Mura Mullan

The village of Ballyliffin on the Inishowen Peninsula in County Donegal has been our second home for around 12 years since Andy and I first bought a holiday home there. We visit three or four times a year and still love it. The views over the Pollan Strand - the local beach - are superb whilst the windsurfers who flock there always make for good entertainment for our children, Louise and Holly.

Ballyliffin is situated right in the north west corner of Ireland about half an hour's drive from my parents' home in Derry, and even though it takes around 10 hours to get there (by car and ferry) from Newcastle, it's worth it as we find it so relaxing. The village is on the route of the Inishowen 100 scenic drive around the Peninsula, which includes Ireland's most northerly point, Malin Head.

Inishowen is home to some great golf courses, including Ballyliffin Golf Club which has two Championship Links Courses; there are also four local hotels, all of which keep us entertained, but it's mainly the peace of the walking and countryside that we enjoy - of course, we don't go to Ireland for a sun tan, so we always make sure to pack some waterproofs!



Mura, Holly, Andy and Louise (with Kassi the dog...) enjoying the beach at Ballyliffin!



The Elms, Specialist Housing Development, Durham



Celebrating our architecture & people over the past 28 years

Jane Darbyshire and David Kendall Limited Chartered Architects & Landscape Architects
Millmount Ponteland Road Newcastle Upon Tyne NE5 3AL T: (0191) 286 0811 F: (0191) 286 3870 email: millmount@jddk.co.uk www.jddk.co.uk

Millmount News | Spring 2016



(L to R) Ross Frazer, Project Manager RSPB, Alison Thornton-Sykes, Principal Architect JDDK and Michael Copleston, Area Manager RSPB.

Sherwood Forest Visitor Centre

We're delighted to have been chosen by the RSPB-led consortium as architects for the proposed £5.3m Sherwood Forest Visitor Centre for Nottingham County Council.

The consortium, which includes the RSPB, The Sherwood Forest Trust, Continuum Attractions and Thoresby Estate, announced our appointment in late November last year following previous projects for the RSPB, most prominently at the award-winning Saltholme Wildlife Reserve and Discovery Park Visitor Centre in 2009.

We are still at fairly early design stages with the concept designs proposing an iconic building knitted into the existing landscape and community at the site so that a village square-type public space is created between the new building and the existing

cricket club, YHA hostel and the Arts & Crafts Centre. The building is also an expression of the visitor journey into the forest with its curved, twisted form, created by the staggered roof beams, reflecting the forest environment and the "Trees that sheltered him" concept of Robin Hood. Indeed, one of the most popular attractions of the whole area is the magnificent Major Oak, the over 1,000 year old oak tree where the Merry Men outlaw band supposedly slept.

The linear format pulls visitors through and down the 5m level change into the double height café space and out to the exterior amphitheatre sheltered by the overhanging canopy, an integral part of the striking copper roof that will oxidise over time to a green colour, reflecting the surrounding natural tree canopies.

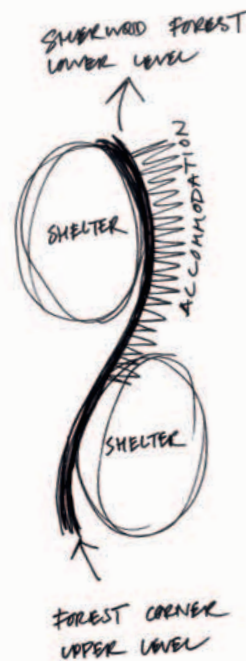
JDDK Principal architect, Alison Thornton-Sykes, commented:

"The current visitor centre, which was built in 1977, was judged to be no longer fit for purpose so our brief is for a new building to be set close to the existing Forest Corner and designed to enhance the visitor experience."

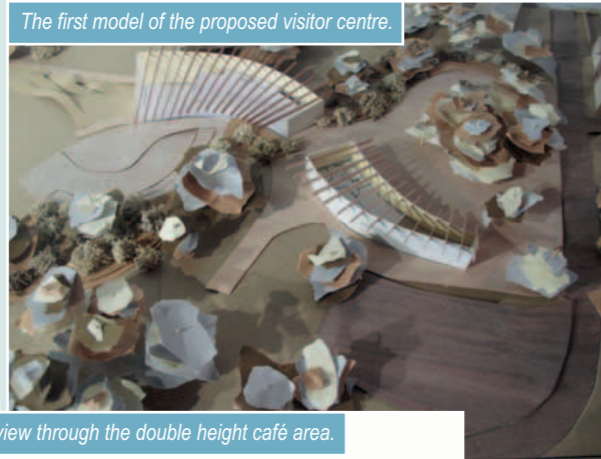
"There are several different elements to this from creating an initial welcoming area for visitors with toilets, retail and recreation facilities to creating wilderness landscape zones to give visitors a real sense of the ancient forest environment."

"The RSPB and Nottingham County Council have held various consultation meetings at the nearby Edwinstowe Library with the local people and stake-holders, listening closely to their views which we incorporated into the designs about which we have been consulting the local community in recent weeks."

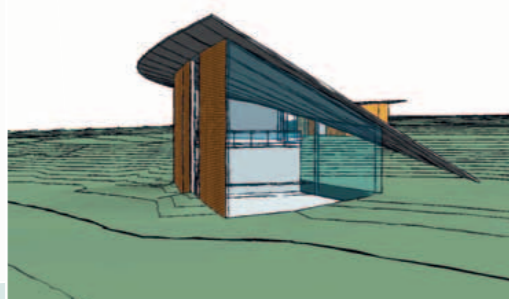
Original concept sketch of the twisting form with sheltered areas either side.



The first model of the proposed visitor centre.

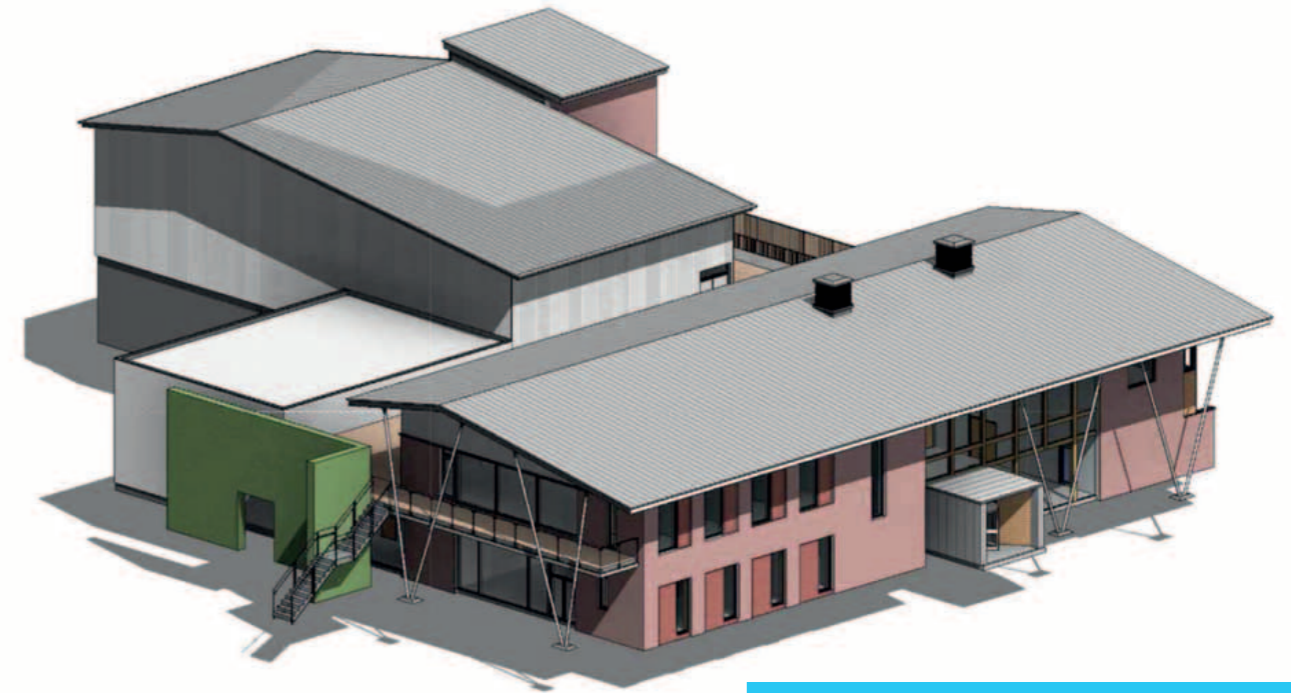


3D view through the double height café area.



The over 1,000 year old Major Oak.

Proton Beam Therapy Centre for Bomarsund



PPI's proposed Proton Beam Therapy Centre at Bomarsund

In February, Northumberland County Council approved our Planning Application submitted on behalf of our clients, Proton Partners International (PPI), for an innovative state-of-the-art Proton Beam Therapy Centre at the Earth Balance site in Bomarsund near Stakeford.

The Centre, the first of its kind in the UK, will be open to both referred NHS and private patients offering the new proton therapy which releases its cancer-destroying energy with sub-millimetre precision, thereby minimising damage to adjacent tissue.

The Earth Balance site was established in the 1990's as a demonstration of environmental and social sustainability. The project reinstated a derelict farm and introduced new local businesses using locally produced renewable energy and was intended to become a showpiece for sustainable development owned by the Earth Balance charity.

In conjunction with landscape architects, Glen Kemp, the project's first step was a master planning exercise to ensure a holistic approach to the whole site which would be enhanced rather than threatened by the design and construction of the new cancer centre. A critical consideration of any healthcare building is to link the patient to the external environment so that the masterplan placed the facility at the heart of the surrounding rural landscape.

The Centre itself has been designed around patient experience, creating a calming atmosphere from arrival to treatment, to try to overcome the inevitable anxiety associated with cancer and medical institutions.

However, the building will contain a Cyclotron, which generates the Proton Beam, and other specialist equipment which generate neutrons and gamma rays, in addition to the Proton Beam. This equipment

Mike Moran MBE, Chief Executive Officer of PPI, commented:

"We are delighted to be working alongside JDDK to build the first proton beam therapy centre in England. We intend to deliver a world-class patient centric service to the people of the North East which will include the provision of imaging, chemotherapy, radiotherapy and proton beam therapy. It was important for us to engage with a team of highly motivated architects with a track record of delivering complexity in a simplistic manner."

requires shielding in underground bunkers to protect staff and patients to at least the same levels as apply to X-ray and radiotherapy suites elsewhere in the UK.

Separating the bunkers and plant areas from the patient areas was obviously a critical issue in the design as was the logistics of installing the huge equipment utilised in the revolutionary process (which required sections of the roof to be removable).

The end result is a stunning design which sits comfortably within the surrounding landscape, is practical for the huge demands of safety and M&E requirements the process involves and yet also provides a healing environment that enhances the patient experience.



3D View Towards Entrance



3D View

The Elms

Designing for an Ageing Population

The Elms, our new specialist housing development for the over 55's in Chester-le-Street, has been widely praised as an example of best practice in its field.

The £6.5m scheme for Cestria Housing, now part of the ISOS Group, was visited in December by the Homes & Communities Agency's vulnerable and older people practitioner group with representatives from London, Manchester and Liverpool given a tour of the development by Zoey Hawthorne, Assistant Director of Development and Property for Isos, and Steve Riding, Development and Regeneration Manager for Cestria Community Housing.

The development consists of 52 apartments and six bungalows, for rent, sale and shared ownership, all designed specifically for people aged 55 and over who require support with their care or housing. The Elms was designed in response to the recommendations set out in the government's 2009 HAPPI (Housing our Ageing Population: Panel for Innovation) Report, which aims to encourage a healthy and active lifestyle for people aged 55 and over.

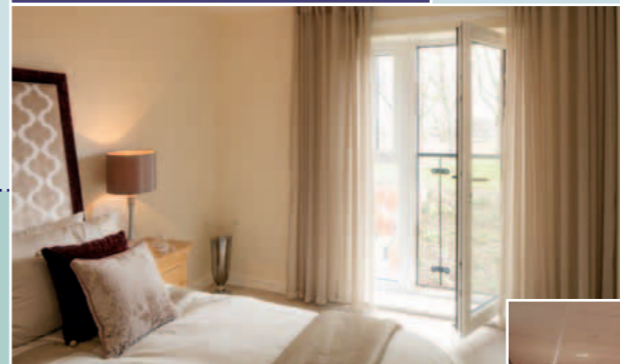
JDDK Director and Project Architect, Mura Mullan, explained, "The HAPPI Report sets out 10 design principles for housing for aged persons which we've been able to incorporate in The Elms. The scheme includes elements of flexibility for residents in anticipation of their needs changing over time. The internal layouts therefore take into account the differing levels of dependency the residents will encounter and are flexible enough for people to stay in their homes for as long as possible."

HAPPI Recommendation 1.



Generous internal standards, with potential for three habitable rooms and designed to accommodate flexible layouts including adaptations to suit a resident's changing needs over time.

HAPPI Recommendation 2.



Care is taken in the design of homes and shared spaces with the placement, size and detail of windows and to ensure plenty of natural light and to allow daylight into circulation spaces. All bedrooms and living spaces have full height windows offering views to the outside from standing and seated positions as well as from the bed. The benefits of sunlight are maximised with north facing rooms largely avoided.

HAPPI Recommendation 3.



The building layout maximises natural light and ventilation and apartments and shared spaces have balconies or terraces with enough space for tables and chairs as well as plants.

HAPPI Recommendation 4.



In the implementation of measures to ensure adaptability, homes are designed to be 'care ready' so that new and emerging technologies, such as telecare and community equipment can be readily installed.

10 HAPPI Recommendations



Kevin McGeough, Head of Corporate Strategy at the Homes and Communities Agency (HCA), commented:

"The Elms has set a benchmark for high quality extra care in the north east. HCA are delighted that our Care and Support Specialised Housing fund has helped Cestria to deliver this excellent project. We have been particularly impressed by the developers understanding of the HAPPI principles which are clearly evident in the scheme."

Cestria Community Housing's Managing Director, Martin Warhurst commented:

"The Elms is our flagship development and we're incredibly proud of it. This was a challenging site to work on with the building situated on a steep slope and a railway line close by.

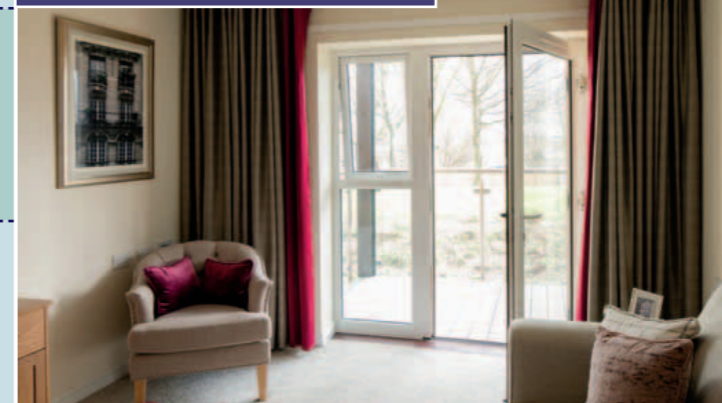
"But despite this our development team, along with all the partners involved, have produced a state-of-the-art scheme using some truly innovative design concepts. The result is a development which we believe will make a huge difference to the lives of all the new residents and we are sure it will be a place that they are proud to call their home."

HAPPI Recommendation 5.



Building layouts promote circulation areas as shared spaces that offer connections to the wider context, encouraging interaction, supporting independence and avoiding an institutional feel.

HAPPI Recommendation 8.



Homes are energy efficient and well insulated, but also well ventilated and able to avoid overheating.

HAPPI Recommendation 6.



Multi-purpose space is available for residents to meet, with facilities designed to support an appropriate range of activities - perhaps serving the wider neighbourhood as a community hub as well as guest rooms for visiting friends and families. The café is open to the public.

HAPPI Recommendation 7.



Natural environment is nurtured through new trees and hedges and the preservation of mature planting. The layout retains some significant mature trees on the site.

HAPPI Recommendation 9.



Adequate storage is available outside the home together with provision for cycles and mobility aids.

HAPPI Recommendation 10.



The shared external spaces are designed to give priority to pedestrians rather than cars.



A CGI of the five bungalows proposed by the JDDK model.

Designing for Dementia

In November last year, we attended the International Dementia Conference in Birmingham to present designs for a new model of housing scheme developed specifically for people with dementia.

In collaboration with the Newcastle-based Dementia Care charity, we have adopted a new approach to designing homes for people living with dementia as Director and Project Architect, Mura Mullan, explains, "The designs we have been working on with a number of RSL's (Registered Social Landlords) have been produced with Dementia Care to develop a new housing model for tenants with dementia - a condition which is unfortunately affecting an increasing proportion of the population."

"We began by understanding what a crucial role design of the environment can play in supporting patients during the gradual loss of capability that dementia causes. We have therefore developed an approach that avoids the larger scale care home model by providing a cluster of small domestic scale bungalows that work together creating intimate indoor and outdoor spaces that encourage people to choose their preferred environment."

"The fundamental aim of the design is to empower tenants by maximising choice and encouraging opportunities for social interaction, and by

intrinsically linking the bungalows to the landscape.

We create a series of visual prompts that help the tenants better understand (and respond to) their environment."

This scheme proposes five bungalows, each providing accommodation for five tenants with all rooms large enough to fully comply with the wheelchair design guide and to accommodate potential changing needs, ensuring residents have the peace of mind knowing they will not have to move. The design clearly defines public areas to the front of the bungalow, away from the private individual rooms with en-suite facilities to the rear, arranged off an extensively glazed corridor which overlooks the communal gardens.

Just as much thought has gone into the external areas with enclosed central courtyards, raised planting beds to allow tenants in wheelchair or with reduced mobility to be involved in garden activities, allotment areas, a greenhouse and wildflower gardens.

Mura Mullan continued, "As a practice, we've worked with several groups to design homes suitable for their special needs and were delighted to be invited down to the Dementia Conference to present our designs as a new model for housing for people living with dementia."

Carol Brown, Head of Best Practice at Dementia Care, commented:

"People in our care are supported to remain independent for as long as possible. In this way, we can help people to retain the ability to dress, wash, cook, do housework, remain mobile and socially interact which helps to slow down the progress of their dementia and enables a more fulfilling life."

"JDDK have been an excellent team to work with. They have listened to what we have requested in relation to the needs of people with dementia and then designed residential accommodation that goes beyond what we first imagined. We really look forward to giving people with dementia the opportunity to live in a supportive environment and seeing the benefits and opportunities the design will give."

Royal Opening for The Witham

HRH The Duke of Gloucester officially opened our award-winning £3.2m refurbishment of The Witham in Barnard Castle on March 2nd. The Grade II listed Hall and the adjacent Testimonial Building and Music Hall have been completely refurbished with new studio units created along Hall Street to form a thriving new artistic quarter for budding local artists.

The landmark arts complex which now provides a new cultural, community and commercial hub in the centre of Barnard Castle with event space, studios,

offices and meeting rooms was designed to spearhead the regeneration of the town centre and has also won the Royal Town Planning Institute (RTPI) North East award for Planning Excellence.

The project had its share of challenges as JDDK project architect, Adam Vaughan, explained, "It's always a challenge to successfully introduce new build elements in a sympathetic manner into a historic setting but it was particularly so given the restricted site we had in Barnard Castle but the restoration has created superb spaces and it's great to now see these being fully used by local people."



(L to R) Katie Taylor (Centre Manager), Chris Myers (Durham County Council Regeneration Projects Manager), HRH Duke of Gloucester, with JDDK Project Architect, Adam Vaughan



CGI of the interior of the refurbished Post Office.

Project Architect, Adam Vaughan, commented:

"It's a fascinating project, not only because this is such an iconic building right on our doorstep, but also because it's been entirely designed and managed using BIM. We're developing an innovative workspace which departs from more conventional office layouts to focus on new ways of working and collaborating, and RIBA Enterprise are at the forefront of this. In addition, we've also worked closely with RIBA Enterprise to field trial new additions to the BIM software environment such as NBS (National Building Specification) Create and the NBS BIM Toolkit."

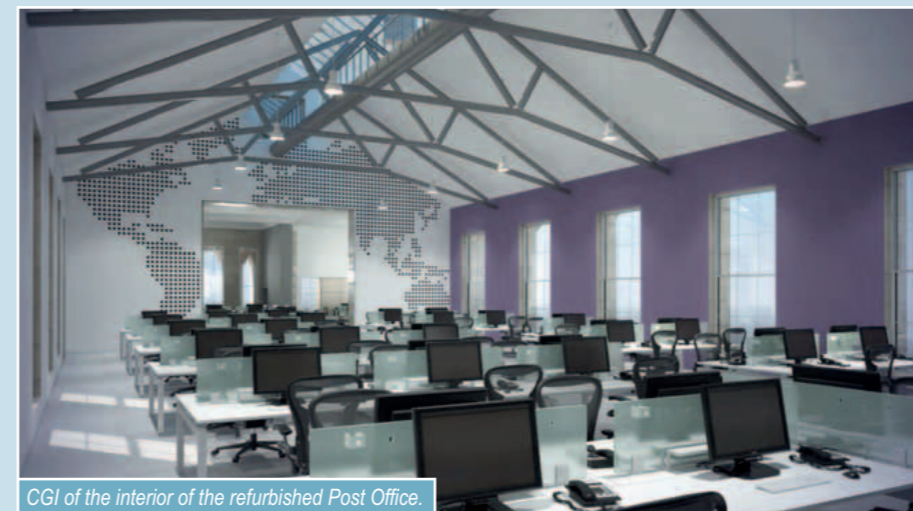
Post Office On Site

On February 16th, Surgo Construction began work on our £1.8m refurbishment and redevelopment of the Old Post Office on St Nicholas Street in the centre of Newcastle.

Working on behalf of RIBA Enterprises, our design is, in essence, to return the building to its unified state prior to it being split up in 1999, creating work space for some 210 staff as teams currently located across different parts of the building are brought together across two main floors. The six month programme will see contractors initially dealing with the former architect studios in a 16 week Phase One before staff

decant into this refurbished space whilst construction work is completed in the remainder of the building.

The entire project has also been designed and managed using Building Information Modelling (BIM). The whole team of Armstrong Rhead - M&E, Building Design North - Structural, Ward Robinson - Interiors, Todd Milburn, QS and Project Management has thus been able to collaborate far more easily, swapping information and highlighting potential problems in a digital format. Surgo Construction are also making use of BIM during their site phase to coordinate work packages.



CGI of the interior of the refurbished Post Office.



BIM technology facilitates greater transfer of information at the design stage.

St Oswald's Anniversary

On Saturday 12th March, St Oswald's Hospice celebrated their 30th anniversary with a glittering Ball at the Banqueting Suite of Newcastle's Civic Centre. Attended by some 400 staff, supporters and guests (including ourselves), the Ball was hosted by BBC Sports Presenter, Jeff Brown, and former Scotland international rugby player, Doddie Weir.

We have worked with St Oswald's for over 27 years, involved in every stage of the charity's growth since

the original hospice opened in 1986 and was awarded the RIBA 'Building of The Year' in 1989. Later major extensions have included the Day Services wing (1997), Coleman Education Centre (1998), Children's Unit (2004) and Day Services Centre (2009). The practice has also been responsible for all the smaller extensions and refurbishments including the ITC Suite (2011) and Bereavement Suite and Therapy Suite (both 2013).



The JDDK table at St Oswald's 30th Anniversary Ball