

STOP PRESS

JDDK scheme, The Witham has been shortlisted for both the RIBA North East Awards and the RICS North East Renaissance Awards whilst our project at the Marie Curie Hospice in Edinburgh has been shortlisted in both the Community Benefit and Design Through Innovation categories in the RICS Scotland Awards.



The Marie Curie Hospice in Edinburgh



The Witham

Millmount News / Autumn 2013

Royal, and almost Royal, Visitors

HRH Princess Anne officially opened the Holborn House development in January. The £1.8m innovative refurbishment of this 19th Century landmark building in South Shields created 26 new apartments for Isos Housing Group.



HRH Princess Anne unveils the plaque at Holborn House.

The design features a central atrium which provides communal space for gathering and an internal 'street' with a roof light that brings daylight into the heart of the building. Apartments are positioned around the perimeter of the building to benefit from natural light with the existing fenestration of the Victorian building retained. The radical redesign has transformed the building into high quality accommodation for vulnerable adults.

The previous month, the £135,000 refurbishment of the People's Kitchen Alison Centre had been officially opened by the Duchess of Northumberland.

The charity's brief was to refurbish and internally reorganise their Grade II listed building on Bath Lane, to provide better facilities for both volunteers and service users. The resultant improvements include a new clothing store, an extended goods reception warehouse, a consultation room for one-to-one with 'friends' - the centre's users, signposting for accommodation and healthcare provision, and new facilities for volunteer training and administration offices.



The Duchess of Northumberland at the refurbished Alison Centre.

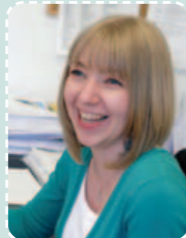
Good luck to Sam Dixon...

...who will be temporarily leaving us on maternity leave, expecting her first child in May.



Congratulations...

...to Clair (nee Mawston) and Nathan Saunders who married on February 1st



People's Passions Written In Stone

Ian Clarke's love of gardening is well known, but a new, or rather a revisited, avenue for his creativity is stone carving.

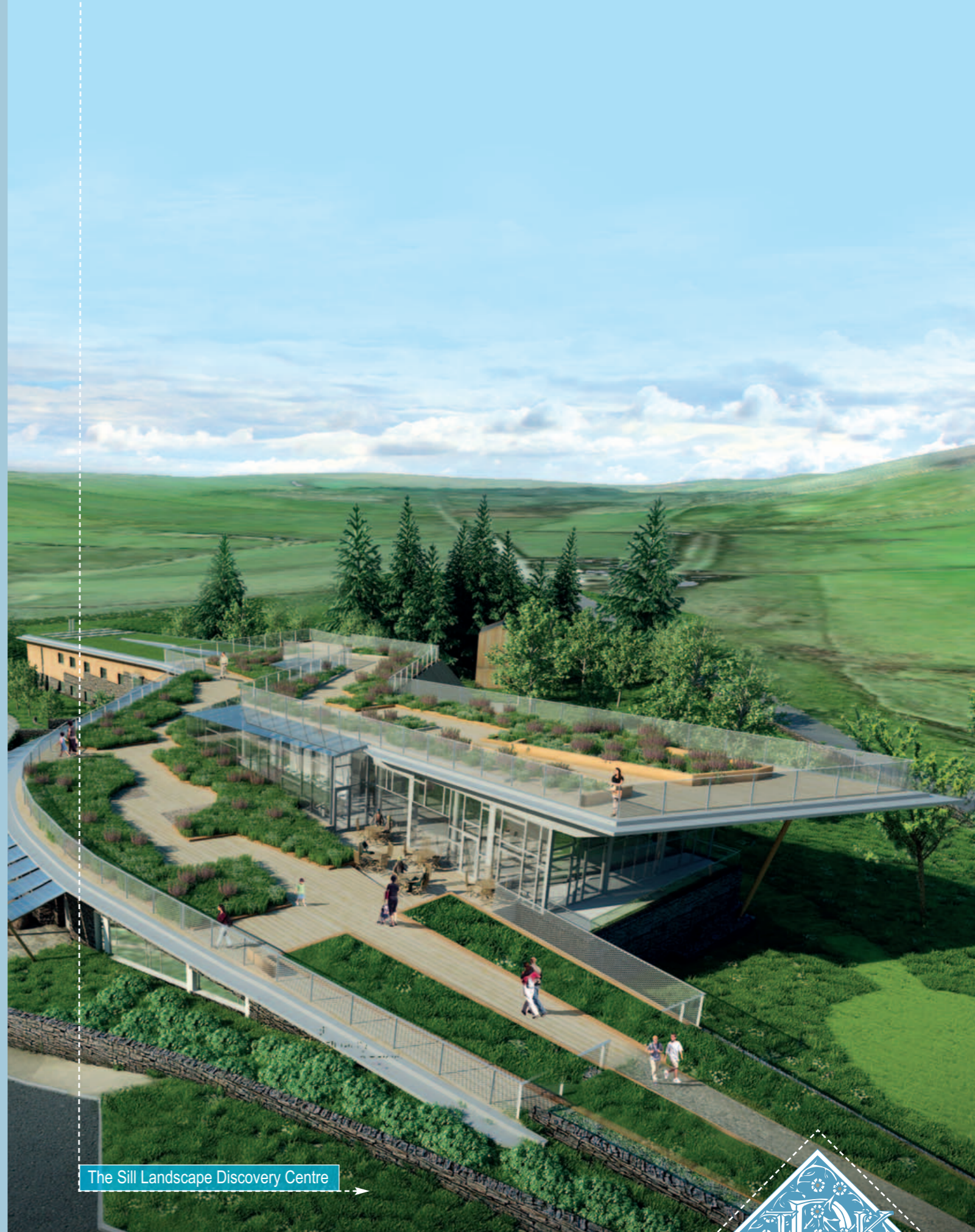


Ian Clarke and two of his recent stone carvings

Through a mutual friend Ian began to renew his love of the craft some two years ago, and attended classes from sculptor, Pete Graham, at the Mushroom Works in the Ouseburn, as he explained, "I had been keen on carving at art school before being distracted into architecture, and 30 years later got out my tools again! There is something very direct and absorbing about carving stone - it's just the stone, chisel, mallet and you, with nothing else to get in the way."

"Carving takes courage and confidence; hesitant strokes of the chisel look weak, whereas decisive ones look strong, but there is no going back once the mallet hits the chisel!"

"So far I've been working on letter-cutting and in relief, but the move to carving in the round is becoming rather enticing. I certainly want to develop my skills more. There's a general resurgence in traditional crafts of all sorts in recent years so I'd urge anyone to give it a go as it is absolutely absorbing once you start and it's a great antidote to the computer!"



The Sill Landscape Discovery Centre

Celebrating our architecture & people over the past 27 years

Jane Darbyshire and David Kendall Limited Chartered Architects & Landscape Architects
Millmount Ponteland Road Newcastle Upon Tyne NE5 3AL T: (0191) 286 0811 F: (0191) 286 3870 email: millmount@jddk.co.uk www.jddk.co.uk

Millmount News | Spring 2014



Final Design for The Sill Unveiled



View from the south east showing the main visitor entrance.

Stuart Evans, Project Director for The Sill, NNPA, commented:

“ We have been a very demanding client for JDDK. We have asked for: design by community engagement; a landmark building which will draw people from across the country and Europe to visit the new centre; achieve a building with BREEAM excellence; and gain support from peers via the North East Design Review. The new building needs to be low cost whilst its main aim is to provide an attractive building to more than double visitor numbers, triple average dwell times and produce much higher income earning facilities. The overall aim is to create a stunning building to inspire people to visit and then go on to learn about and discover their landscapes. JDDK have achieved all the above and much more. JDDK have both managed our reputation and created a fantastic design within overall income generating and cost parameters and on time.”

After a lengthy period of consultation, during which around 1,700 people contributed suggestions in a series of open consultation events, meetings, focus groups and activity sessions, Northumberland National Park Authority and YHA unveiled the final design for The Sill at the end of January at Bardon Mill Village Hall.

The designs for the £11.2m landscape discovery centre will now be taken into the planning stages with an outcome predicted by Summer.

The design is for a building which rises seamlessly out of the natural landscape and features an innovative, publicly accessible roof made from whin vegetation - some of the rare species that grow in the Northumbrian landscape. Other 'green' aspects of the design include local woodchip heating, photovoltaic canopies and solar water heating. The centre will house education facilities, superfast broadband, five external activity areas, serviced office accommodation for outdoor activity businesses, areas for the sale of local products and a local produce cafe.

The Sill's vision is to create a hub which will open up the landscape of the whole of Northumberland

National Park and offer substantial economic benefits to the region, with a £3.35m contribution predicted in its first year as it acts as a shop window for the rural businesses in and around the park.

Tony Gates, Chief Executive of Northumberland National Park Authority, commented, "In just a short space of time, we have consulted people at 130 meetings and our design team have created concepts which are both sympathetic to the environment and inspiring in their vision."

"Over the course of the development phase of the project, which has been backed by the Heritage Lottery Fund, we have invited members of the public to contribute to the design process, and their feedback and ideas have helped to shape the design."

Project Architect, Alison Thornton-Sykes, said, "Iconic projects like The Sill don't come around very often and we are so excited to be a part of this process in conjunction with Glen Kemp Landscape Architects and Cundall as Planning Consultants."

"The Sill will characterise the distinctiveness of Northumberland National Park by reflecting the landscape of Northumberland National Park and

revealing the final designs after so many months of hard work and an extensive consultation is a very special moment for the team at JDDK."



View from the north east showing first floor café with panoramic views



Amble - The Seafood Town

An overall view of the proposed Harbour Village.

JDDK Director, Ian Clarke, commented:

“ The development builds on Amble's heritage and local resources, and engages with wider ideas about local food and character, such as lead by Hugh Fearnley-Wittingstall in his 'fishfight campaign' about the wastage of discards. It is a bold and exciting plan which will not only create and protect local jobs associated with fishing but also form a major tourist attraction to help revitalise the local economy. Through the development of the Harbour Village, it is estimated an additional 20,000 visitors would come to Amble over the first two years and the local economy would receive a boost of nearly £1.2million during this time.”

Funding has been confirmed for our design on behalf of the Amble Development Trust and Northumberland County Council for an innovative scheme to transform the harbour frontage of Amble on the Northumberland Coast.

Originally submitted in August last year, the catalyst for the application was the closure of neighbouring large employers such as Alcan and Cheviot Foods. The 'Amble: The Seafood Town' project proposes major investment in the town's fishing and tourism infrastructure with the aim of promoting it and the town's tourism potential allied to its fishing heritage.

The 'Harbour Village' has three components, the

major one being the construction of a new build Seafood Centre for the sale and distribution of fresh fish, direct from the fleet, surrounded by 15 'Incubator Units' to accommodate small business start-ups. The second element of a new public realm area connects this with the existing Town Square which JDDK designed in the 1990's. The final component relocates the Coquet Shorebase Trust to a new premises adjacent to the Amble Yacht Club, thereby freeing up their existing quayside site for future development potential. The scheme also provides for the provision of a new Quayside Public Footpath which will form a new and continuous waterside pedestrian link between the Braid and the new Harbour Village and general quayside areas.

Social Housing

Construction in social housing is expected to grow by 2.2 per cent annually over the next four years, according to the Construction Industry Training Board's construction skills network forecast and certainly the design and delivery of innovative social housing schemes forms an extremely important part of the practice's work.

Typical of the schemes we are currently involved with is a 38 bed extra care facility on Newlyn Road in Kenton for Your Homes Newcastle with developer, Galliford Try Partnerships North.

The scheme comprises of 18 two bedroom and 20 one bedroom apartments in a three storey building with two storey wings set around communal garden areas. The apartments have specifically been designed in line with the University of Stirling design guidelines to meet the needs of those residents suffering from Dementia. The driving force behind the design has been the wish to ensure that the apartment block avoids any institutional feel and creates bright and engaging spaces (both indoors and out) that encourage residents to use them.

Each apartment's living room opens directly onto either a private terrace/ garden area (on the ground floor) or Juliette balcony (upper floors) which allows



Extra Care Facility Newlyn Road, Kenton

Stephen McCoy, Managing Director, Galliford Try Partnerships North commented:

“ We are pleased to be working again with JDDK on this project. We have developed an excellent working relationship and understanding on the design and delivery of these supported housing projects throughout the region. Continuity of people and experience on these projects is so important to their success.”

each resident to have access to the outdoors. Similarly, each kitchen has a window that opens onto the communal corridor; this reinforces a community.

The individual apartments are designed to be flexible to the changing needs of the residents over time, allowing people to remain in their homes for as long as possible. Communal facilities include a residents' lounge with a carpet bowls area, communal laundry, office and consultation rooms with two roof terraces increasing the levels of natural light and encouraging the use of outdoor spaces to avoid isolation.

Education Projects

- 2014 Harton Technology College
- 2013 King Edward School (KEVI) Sixth Form (Advanced Learning Centre) Block Phase 2
- 2012 King Edward School (KEVI) West Cottingwood
- 2012 Grange First School Refurbishment 2
- 2010 First Steps Nursery
- 2010 North Fawdon Children Centre
- 2010 North Jesmond School Nursery
- 2010 Brunton Day Nursery
- 2010 West End Play Group
- 2010 Kenton Park Nursery
- 2010 Snakes & Ladders
- 2010 St John's Nursery
- 2010 The Cedars Nursery
- 2010 Moorside Primary School
- 2010 Benton Park Primary
- 2010 Jesmond Nursery
- 2010 Hillcrest Nursery
- 2010 Archibald First School
- 2010 St Cuthbert's Primary School
- 2009 Stanley Sure Start
- 2009 Pelton Sure Start
- 2009 Grange First School
- 2009 Westerhope Nursery
- 2009 Laurel Avenue Primary School Nursery
- 2009 Quality and Access for All Audits
- 2007 Regent Farm First School Extended School
- 2007 St Cuthberts School Extended School
- 2006 The Grange Centre at Grange First School
- 2006 Sherburn Hill Primary School Children's Centre
- 2006 Sacriston Primary School Children's Centre
- 2006 Benfieldside Primary School Children's Centre
- 2006 St Oswald's Infant and Primary School
- 2005 Howletch Primary School Children's Centre
- 2005 Woodham Burn Junior and Infants School
- 2005 St John's Primary School Nursery/Sure Start
- 2005 Benedict Biscop Primary School
- 2004 Stanhope Primary School Nursery/Children's Centre
- 2004 Tudhoe Moor Primary School Children's Centre
- 2004 Laurel Avenue Primary School Children's Centre
- 2004 Sacred Heart Primary School Children's Centre
- 2003 NOF for PE and Sports at Walbottle Campus
- 2003 NOF for PE and Sport at Kenton School
- 2003 NOF for PE and Sport at Sir Charles Parson's School
- 2003 NOF for PE and Sport at Hawkhurst, Keilder
- 2001 Sacriston Infants School Space for Sports and Arts
- 2001 Esh School Space for Sports and Arts
- 2001 Seaham Dene School Space for Sports and Arts
- 2001 Chillingham Road Primary School Space for Sports and Arts
- 2001 Wyndham Primary School Space for Sports and Arts
- 2001 St Catherine's Primary School Space for Sports and Arts
- 2001 Farne Primary School Space for Sports and Arts
- 2001 St Helen Auckland Primary School Sure Start
- 2001 Wooler Primary School Sure Start
- 2001 North Tyneside College



Pelton Children's Centre

Many construction companies are gearing up for increased work within the schools sector following February's announcement from the EFA (Education Funding Agency) of the school capital maintenance and Devolved Formula Capital (DFC) allocations.

£1.2bn has been made available in 2014 to 2015 to maintain and improve the condition of school buildings across the country. A further £200m of capital funding for the same period will be given directly to schools and academies as DFC.

Over the years, the practice has been involved in numerous education projects spanning all stages of education including pre-school, primary, secondary and tertiary. Our earliest education work was in the post-16 sector, refurbishing existing buildings as well as new build provisions at a number



Chillingham Road Primary School

Nick Conway, Headteacher at, St Cuthbert's Primary School, commented:
“The playgroup yard has been a superb project which has transformed an underused space into a fantastic facility - very well planned and superbly organised.”

of the region's FE Colleges. Our most recent example of work in this post-16 sector is that at King Edward VI's Advanced Learning Centre in Morpeth.

Whether we have been working on education for young adults or for the youngest members of our society, our projects have proved that good design is not only highly cost-effective at making the most of limited budgets, but can also transform a facility and the learning experience of both pupils and staff.



Malcolm Aitchison, Project Manager at Newcastle City Council, commented:
“JDDK have demonstrated their versatility and commitment to high quality service in delivering design services on a large number of varied and challenging projects within this programme.”



Farne Primary School



New Music and Advanced Learning Centre at King Edward VI School

Typical of the school improvement scheme the practice have been involved in are a brace of projects for King Edward VI School (KEVI) at Morpeth, transforming two of the School's outdated buildings to create a modern Music School and a remodelled Advanced Learning Centre.

Project Architect, Adam Vaughan, explained the projects, "Our work at KEVI began in 2012 with proposals for the refurbishment and extension of the West Cottingwood building, a standalone Victorian building in the school grounds. Bringing it back from a state of disrepair to become the new Music Department with classrooms, practice rooms and recording studio, we also added a new rehearsal and performance space with



excellent acoustics. This visually distinctive extension has a new portico signposting the entrance to the building and giving the Music Department a real presence on the school campus."

The second project, to refurbish the Advanced Learning Centre began on site in August 2013. Adam continued, "The existing Centre is a 1960's concrete framed structure which the school wished to overhaul to create a modern learning environment for Sixth Formers more akin to University education."

The design takes advantage of the robust concrete frame to knock out walls and open both floors into a new entrance atrium. Contemporary materials were used on the extensions, including fibre cement cladding and aluminium roofing, to create a distinct identity for the centre. The project team also took the opportunity to address summer overheating with a natural ventilation strategy including passive roof terminals.



King Edward VI School Advanced Learning Centre before and after refurbishment



The meeting area of the Advanced Learning Centre

Simon Taylor, Executive Headteacher of the school, commented:

“We are delighted with the refurbished Music School and Advanced Learning Centre. These two buildings were in such a state of disrepair, that I would never show them to school visitors. Their transformation is such, that they are now the first port of call to show off to prospective parents, visiting teachers and others. The design of the buildings by JDDK, has more than met our aspirations, particularly in maximising space and light. Most importantly, they have greatly enhanced the learning spaces for our students who are equally impressed by the transformation.”



King Edward VI School Advanced Learning Centre before and after refurbishment





The extensions to the patient dining room at Marie Curie Newcastle.

Timetable No Barrier For Hospice Improvement Projects

The tight timetable imposed by the Department of Health's 2013 Capital Funding Grant programme to fund improvements to the physical environment of hospices proved no barrier to five recently completed projects.

Applications from hospices were required to be submitted by 5 November with projects to be completed by end of March 2014, necessitating many hospices to begin the design process before they knew if their application would be successful. The Department of Health eventually received some 183 applications with a total requested amount of £91m for their £60m fund, which was administered by the Help The Hospices grant team, with the majority of applications being for projects of £500,000 to £750,000 in value.

Project Architect, Stuart Franklin, explained the practice's role, "We were approached by our clients, St Oswald's Hospice in Newcastle for two separate schemes and Marie Curie Cancer Care for projects at their hospices in Newcastle, Hampstead and Bradford. The guidelines issued by Help the Hospices made it pretty clear that limited budget schemes would be favoured, allowing the grant to be widely dispersed, so whilst the five schemes were very different in detail, they were all designed to improve patient services but within a fairly small budget."

The two schemes at St Oswald's Hospice in Newcastle have improved the Bereavement Suite by reorganising internal spaces and a small extension to give dignity and privacy to families, whilst an infill in the adjacent Children's Unit has created a therapy suite for sensory activities and a 'secret' sensory garden in the surrounding external space.

At the Marie Curie Hospice in Newcastle, a £312,000 contract has seen the internal refurbishment and an extension to the patient dining room which will be integrated with the staff coffee room although screened by glass panels. The new facility is finished in a completely different palette to the rest of the hospice and opening onto a central courtyard, creating a complete break from the normal hospice environment for patients, visitors and staff.

In Hampstead, the £660,000 refurbishment of the 3rd Floor Day Unit section of the Marie Curie Hospice has created a 'streetscape' off which treatment rooms, a gym and lounge areas lead off with borrowed light from the glass partitions in these areas.

Finally, an intense £570,000 refurbishment project of Marie Curie's Bradford Hospice refurbished patient bedrooms and en-suites in-line with latest recommendations whilst a general internal refurbishment brings new life into the whole floor encompassing improvements and repairs to the glazing, heating and ventilation systems.



The new reception area at Marie Curie Hampstead.



St Oswald's Children's Unit Therapy Unit.

Stuart Franklin, JDDK Project Architect, commented:

"The five projects improved patient services significantly, punching way above their weight in terms of capital investment. It was a very tight programme for all the projects but both St Oswald's and Marie Curie showed their confidence in our ability to submit their applications and be prepared to move very quickly to see the projects completed within the specified timescale. We're delighted to be working with both organisations with whom we enjoy very good working relationships."

Calvert Trust Chalet Opens At Kielder

The first of a planned 15 fully accessible, self-catering chalets at the Calvert Trust's Kielder Water & Forest Park centre has now been completed as part of our proposals for a £10m scheme to remodel the existing activity centre and create a new visitor centre complete with accommodation.

The design of the spacious three bedroom chalet, which enjoys superb views from the fully glazed gable end over a private patio and onto the forest, has been inspired by its natural setting. The gently curving roof mirrors leaf forms to suit the functions inside.



The spacious interior of the new chalet.

The glazed gable of the chalet.

The design incorporates a gently curving roof.



Northumberlandia Visitor Centre

The JDDK designed Northumberlandia Visitor Centre opened in March to provide a focus for visitors to the landform sculpture of a reclining lady - the Lady of the North - near Cramlington.

Designed as the first of a possible series of flexible buildings to sit sensitively within the woodland setting, the new single storey 74 sq m visitor centre contains a small café, retail area and base for staff together with two accessible toilets and a decked courtyard area to one side for group gatherings.

The design concept has been inspired by the heritage of ancient Anglo Saxon settlements, the archaeological remains of which were discovered at the nearby Shotton surface mine as Project Architect, Alison Thornton-Sykes explained, "The Anglo Saxon settlements were simple wooden structures aligned in the same orientation so our concept here was to replicate this with a series of rectangular buildings organised around courtyards filled with existing trees and ferns and linked by wooden walkways to provide a scheme that can be delivered in phases. The centre sits within the existing woodland setting with minimal disturbance to the trees offering the visitor time to reflect and enjoy the peaceful environment."



A pipe band marks the official opening of the Visitor Centre.



The design of the Centre is inspired by ancient Anglo Saxon settlements.

Northumberlandia is a unique landform sculpture of a reclining lady, designed by the world renowned architect and landscape designer, Charles Jencks and made possible by the adjacent Shotton Surface Mine. Made of 1.5 million tonnes of rock, clay and soil, she is 100 feet high, a quarter of a mile long and set in a 46 acre community park with free public access. She cost £3 million to construct, which was privately funded by The Banks Group and Blagdon Estate and is now under the stewardship of open space management charity, The Land Trust and managed on behalf by Northumberland Wildlife Trust.