

Sunderland Partnership WINS AGAIN!



(L to R) Barry Coe of Sunderland City Council Building Control, Sharuna Sagar of BBC's Look North and Kevin Turnbull.

Our partnership with the Building Control Department of Sunderland City Council won the Building Excellence Regional Best Partnering Award for a third time and now goes onto the LABC National Awards held this year in London.

The Partner Authority Scheme is an innovative initiative introduced by Local Authority Building Control to create a new and more practical approach to obtaining Building Regulation Approval. Partnering allows a company to link with a local authority of its choosing for the plan approval of all of its projects throughout England and Wales, so eliminating inconsistency, uncertainty and delays. The scheme allows for a one to one relationship for the plan approval aspects of all construction projects irrespective of location.

We've been working in partnership with Sunderland City Council Building Control since 2002 and have been able to access their expertise on complex building regulations on everything from the redevelopment of the Kings Cross area in London to the award-winning RSPB building at Saltholme in Stockton.

JDDK Director, Kevin Turnbull, commented: *"There's several tangible benefits to the very close relationship we've built up with staff at Sunderland's Building Control Department starting at the very earliest design stages when projects are at their infancy. We also receive the very best training on changes in Building*

Regulations through a very successful seminar programme. The main advantage, however, is probably consistency of interpretation, allowing us to develop our designs more efficiently. The Building Control officers now understand the way we work and our priorities as designers - their flexible approach to considering options for compliance to the more complex Regulations is of great value to our clients' projects."

Barry Coe of Sunderland City Council Building Control, commented:

"The relationship works both ways in that, due to the nature and spread of JDDK's workload, we are now promoting one of Sunderland City Council's services way beyond the city boundaries. In addition, the scope of JDDK's work is very broad, spread over a number of different sectors, including significantly important historic buildings, so that we're very pleased to be linked with such a professional and imaginative practice."

People's Passions Plain Sailing

Adam Vaughan's first experience of boats was when his father, a naval architect, constructed a 12' boat in the family living room!

Bitten by the sailing bug, Adam now races a GP14 two man dinghy twice a week on Derwent Reservoir whilst his great ambition would be to cross the Atlantic on one of the larger yachts he's chartered in the past.

Adam commented:

"I guess it was in the genes, but I do love sailing and after taking all the various tickets you need to charter yachts, I'd love to have a crack at a long voyage although Sue, my partner and a non-sailor, might not be so keen, so racing on Derwent Reservoir keeps me going at the moment."

"I have talked colleagues into coming out a couple of times, but we capsized when Matt was with me and Stuart had to put up with lashing rain and squalls, but I live in hope of getting more JDDK crew out!"



Adam Vaughan



The St Oswald's Day Services Outpatient Suite in Gosforth, Newcastle.

Celebrating our architecture & people over the past 21 years

Jane Darbyshire and David Kendall Limited Chartered Architects & Landscape Architects
Millmount Ponteland Road Newcastle Upon Tyne NE5 3AL T: (0191) 286 0811 F: (0191) 286 3870 email: millmount@jddk.co.uk www.jddk.co.uk

Millmount News | Autumn 2009



Contemporary Design for St Oswald's Day Services Outpatient Suite



The St Oswald's Day Services Outpatient Suite in Gosforth, Newcastle.

Officially handed over in July, ahead of programme and within budget, the new £2.8m Day Services Outpatient Suite is actually the fifth phase of Newcastle's St Oswald's Hospice with which we have been involved, starting with the design of the original Hospice in 1987.

The Suite includes eight purpose-built treatment and therapy rooms, a patient assessment room, reception area and a patient and carer information point. The first floor comprises of treatment rooms for clinical and medical staff to work from.

The three storey development is a marked contrast to the existing single storey hospice buildings and a response to the surrounding environment, shielding the hospice from the Northern Rock's four and five storey regional offices next door whilst offering a visual transition from these office blocks to the older more domestic hospice buildings by the application of contextual materials used in a contemporary way.

The project was initially commissioned in response to increasing demand for palliative care to patients with life limiting conditions on a day case/outpatient basis and will offer a day hospice, cognitive therapy, complementary therapy and specialist Lymphoedema assessment and management day treatments.

The building has been designed on sustainable principles, as JDDK Project Architect, Stuart Franklin, explained, "The Centre has been located very carefully to preserve the existing mature trees and orientated to maximise views onto the external

gardens. The design is based around a central atrium providing natural light and ventilation into the heart of the building—the stack effect draws in outside air into the ground floor and up throughout the building so that there is no need for mechanical air conditioning."

"The design is very contemporary with external cedar bris-soleil panels providing shielding from the high summer sun and acting as privacy screens to users on the balconies overlooking the external courtyard. Louvre vents to the windows aid natural ventilation and provide a secure night time cooling regime throughout the building. Rainwater is harvested for flushing toilets and to provide irrigation for the landscaping, whilst thermal solar panels on the roof provide a great deal of the building's hot water assisted by a high efficiency gas boiler feeding an underfloor heating system to the atrium and traditional wall mounted radiators to the various treatment rooms."

"Energy use is further reduced by motion sensors to all rooms which control lighting with passive light control to common areas which turn off artificial light once a preset level is reached."

"However, the main design principle of the building is to provide a patient-based environment which will ensure the privacy and dignity of patients whilst reducing waiting times and creating more spacious and tranquil surroundings in keeping with the hospice environment. The core outcome will be improved quality of life for patients and staff."

Jane Hamblin, Facilities Manager at St Oswald's, commented:

"St Oswald's have now worked with JDDK on several projects and they have provided a fantastic service each time. The new Day Services Outpatient Suite was designed with our patients needs at the core. JDDK did an excellent job of incorporating the need for patient privacy and dignity into the design, therefore creating a spacious, attractive and effective building. We have a fabulous relationship with the team and it was a real pleasure working with them."

Stuart and Nicky's Transylvanian Challenge

We like to think our service doesn't end when a building is handed over and with St Oswald's Hospice in Newcastle, we've built up such close links over the years that some JDDK staff are now getting involved with their fund raising.

However, simply donating to their latest event, The Transylvanian Challenge, wasn't enough for JDDK Project Architect, Stuart Franklin, and JDDK Associate, Nicky Hodgson, who were so intrigued by the idea of the nine day adventure that they have signed up to take part.

On the 19th of June next year our dedicated duo, along with another 30 other volunteers, will arrive in Bucharest before travelling to Romania's famed Transylvanian Alps. Starting off from the glacial lake, Lake Balea, at 2,034m altitude, the group then treks across the stunning Fagaras Mountains for two and a half days - with some interesting place names, including "Three Steps From Death" and "The Evil Valley", the trek will be a challenging experience for everyone.

Transferring to bikes, the group then spend another two days cycling across the Transylvanian Plateau, visiting the stunning village of Sighisoara, the last inhabited Medieval citadel in Eastern Europe and birthplace of Vlad The Impaler, the fairy tale village of Viscri and the infamous Bran Castle - more recognisable as Dracula's Castle.

The volunteers then spend their final three days working on projects at the Casa Sperantei Hospice (Home of Hope) in Brasov. Since its establishment



The Faragas Mountains in Romania's Transylvanian Alps.

in 1992 as the first hospice in Romania, it has cared for more than 11,000 adults and children and trained more than 9,000 healthcare professionals and has become a partner of St Oswald's.

Nicky Hodgson commented, "When Stuart first mentioned the Challenge, we just thought it would be a fantastic way to raise money for

such a good cause. JDDK has already sponsored us and we're currently working on friends to raise the rest of the sponsorship money we need - if anyone does feel generous, it's easy to donate - just visit www.justgiving.co/nickyhodgson.

Nicky Hodgson and Stuart Franklin get into some serious training in front of the new Day Services Outpatient Suite.



Jennie Evans, Community Fundraiser at St Oswald's, commented:

"We're really excited about this overseas challenge. It incorporates something for everyone - hiking, cycling, voluntary project work and beautiful scenery on the way. We are thrilled that Stuart and Nicky have signed up to the challenge and I wish them both lots of luck. We are extremely grateful, as they will be helping to raise vital funds for St Oswald's, ensuring we can continue providing specialist care for North East adults and children with life limiting conditions."

"Places for the challenge are still available, so if you're interested please visit www.stoswaldsuk.org or contact me on 0191 285 0063"

Designing for End of Life Care



St Columba's Hospice



St Oswald's Children's Service Unit Entrance

Ian Clarke, JDDK Director responsible for healthcare design, comments:

The word 'hospice' describes a holistic philosophy of care for those with life-limiting or terminal medical conditions, and their families and loved ones. Many people are surprised by this definition, they think of hospices simply as a building type! JDDK have had the privilege of designing settings for hospice care since the early 1980's when Dorothy Jamieson founded St Oswald's hospice in Gosforth, Newcastle upon Tyne.

Thinking about hospices in this holistic way opens up a panoply of important issues about what care environments must support, extending far beyond high levels of clinical functionality to include promoting quality of experience for those who use them, day to day, be they patients, relatives or care staff: hospices are about maximising quality of life,

both the body and the spirit. It is very reassuring to see that scientific evidence has been emerging in recent years to prove the direct medical value of such an approach in hospitals, so that thinking and learning can be shared across boundaries.

As a designer, central to this process is empathy, putting yourself into not just the shoes but the mind of the building user, and designing 'from the inside out', as well as ensuring that the building looks good and works well from the outside in. Of course this should apply to all types of building where people live and work, and to all scales of project from the simple remodelling of a visitors room to the design of a whole new hospice, or the refurbishment of a hospital ward. The common factor is people, rather than bricks and mortar.

For more information contact Ian Clarke: ianc@jddk.co.uk

Irish Hospice Foundation Links

Since 2003, JDDK Director Ian Clarke has been a member of the NHS Design Review Panel and an 'Enabler' for CABE (Commission for Architecture and the Built Environment), both tasks being about promoting good design and sustainable outcomes for NHS capital projects. This new stream of guidance work for JDDK has now been taken across to Ireland where the team are providing design guidance services to the Irish Hospice Foundation. This has included close involvement with IHF's newly published 'Design and Dignity Guidelines' together with seminars and lectures for both the general public and individual health organisations, even at one high profile event in tandem with Hollywood star Gabriel Byrne who is a keen IHF supporter!



Patient bedroom at St Gemma's Hospice, Leeds (NHS Patient Environment Award 2003): The architect should always sit in the patient's chair, both metaphysically and literally! Scientific research now validates that a view onto greenery has measurable therapeutic benefits.

The architect should always sit in the patient's chair...



Simon Whelan, Capital Project Manager, Marie Curie Cancer Care commented:

Inner courtyard garden of St Oswald's Children's Hospice, Newcastle upon Tyne: Natural light, colour and the gentle movement of the breeze keep our senses in touch with the natural world in times that may be stressful.

"The truth is whatever the Client's business is, the critical success factor in procuring a new premises for them is undoubtedly knowledge of their business. Charities are no exception, and the success of delivering a new hospice, revolves around the knowledge of healthcare and of hospice care in particular. When we launched our new hospice project in Solihull, to use the skills and knowledge Marie Curie and JDDK had honed together on our Glasgow hospice, just seemed common sense. We had the opportunity to convert knowledge into tangible benefits, JDDK know our operation, they know the patient comes first for us; this translates into design workshops and briefing sessions that start at 80% complete. We are quicker, more agile, and more intelligent as a team. The design will be right first time delivering cost and programme benefits for Marie Curie."



St Gemma's Hospice, Leeds (NHS Patient Environment Award 2003): Creative briefing and design can place high levels of functionality alongside a high quality experience for building users, be they patients, staff or relatives.



Outpatient's waiting Area or Health Club foyer?

Quality of place can transcend conventional boundaries and expectations. JDDK's design for CABE's 'Healthy Hospitals' Campaign 2003, which received 52% of the Internet vote for the public's preferred vision of a future hospital.



The benefits of getting your hands dirty! JDDK Associate, Mura Mullan, with team members from the Marie Curie Hospice, Glasgow, take part in the King's Fund 'Enhancing the Healing Environment' programme and radically improve the Hospice Visitors' Room to much acclaim!

HEALTH PROJECTS

- 1987 St Oswald's Hospice Adult Unit, Newcastle
- 1989 Cheshire Home, Crook
- 1990 St Cuthbert's Hospice, Durham
- 1990 Marie Curie Hospice, Newcastle
- 1991 McMillan Day Centre (Phase 1), Bishop Auckland
- 1991 Dunston Hill Day Hospital, Gateshead
- 1992 McMillan Day Centre (Phase 2), Bishop Auckland
- 1994 Sick Children's Trust Home from Home, Newcastle
- 1994 St Oswald's Hospice Day Centre, Newcastle
- 1996 St Oswald's Children's Services Unit, Newcastle
- 1996 Pioneering Care Partnership, Newton Aycliffe
- 1998 St Oswald's Hospice Information Centre, Newcastle
- 2000 St Gemma's Hospice, Leeds
- 2000 Marie Curie Hospice Glasgow*
- 2000 Widdrington Health Centre
- 2002 Medical School, Sunderland Royal Hospital
- 2003 Doctor's surgery, Guidepost
- 2003 CABE Healthy Hospital Campaign
- 2003 NHS Design Review Panel*
- 2004 St Oswald's Hospice Day Services Outpatient Suite, Newcastle
- 2005 Marie Curie Hospice, Solihull*
- 2005 St Luke's Hospice, Sheffield*
- 2006 St Columba's Hospice, Edinburgh*
- 2006 Curraheen Hospital, Cork*
- 2006 Irish Hospice Foundation Design Consultancy*
- 2007 King's Fund Project, Marie Curie, Glasgow
- 2008 Dentist's surgery, Newcastle*
- 2009 Sick Children's Trust Home from Home (Phase II), Newcastle

*Denotes ongoing project

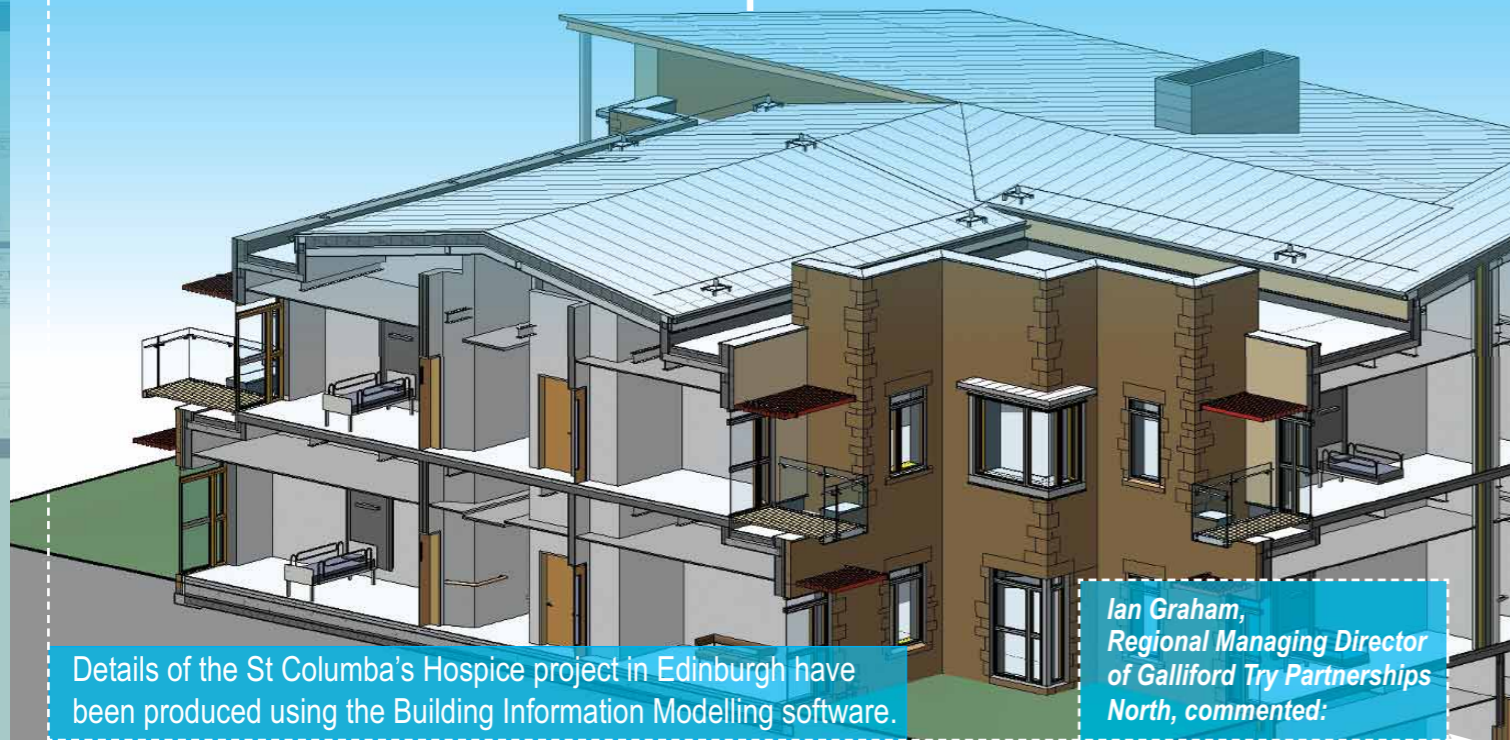


Modern Hospice Design

JDDK Director, Ian Clarke, collaborated closely with Ken Worpole on his new book, *Modern Hospice Design*, which features several examples of our work, including St Gemma's in Leeds, St Oswald's in Newcastle and the Curraheen Hospital in Cork.

Copies are available from www.routledgearchitecture.com

BIM Investment Reaps Benefits



Details of the St Columba's Hospice project in Edinburgh have been produced using the Building Information Modelling software.

Ian Graham, Regional Managing Director of Galliford Try Partnerships North, commented:

“ Working with architects who use BIM software offers contractors immense potential advantages for themselves and their clients. The greatest advantage is the fact that the system flags up any potential clashes between the various trades involved in the construction - for example, it can be seen accurately, in 3-D, how the steelwork relates to the building services. This will enormously reduce risk in any project enabling contractors to work more efficiently and creating savings for the client. A further benefit to contractors is the system's ability to work out quantities which can work as a really useful check for their own QS calculations. ”

As a practice, our reputation has been built upon the twin foundations of putting clients' needs at the forefront of the design process and placing an enormous amount of emphasis on the traditional craft of carefully detailing the interface between the building's elements and materials, so that the final product not only meets or surpasses our clients' aspirations, but is also a structure of delight to be in and around.

Advances in new technologies for producing the drawn and written information required for the design and construction processes, are now offering new opportunities for the profession, building procurers and contractors.

Our investment in Building Information Modelling (BIM) software gives us an opportunity to be at the forefront of these technological advances yet still maintain our more traditional craftsman-like approach to the delivery of the final building.

The investment is already reaping benefits for both clients and contractors as JDDK Director, Kevin Turnbull, explains, “The BIM software allows us to develop a fully accurate three dimensional drawing of the building, to the most minute detail. The 3-D model can then be viewed inside and out, at every scale, from one that will show the overall

massing of a building to a close up of any junction between the building's different elements and materials. As well as using the model in 3-D, we can extract from it more traditional 2-D plans, sections, elevations and details.”

“It also helps us to work with other design consultants, such as structural or M&E engineers, in a more integrated and coordinated manner. By importing their 2-D CAD drawings we can see in three dimensional detail how the various parts of the building interface and thereby highlight and eliminate previously unforeseen clashes between building elements, such as, for example, structural members and service ducting.”

“In addition, the software guarantees accurate coordination between drawings and schedules, and once all the information is complete on the model, it is relatively quick to make alterations to the drawings and schedules, which can be a great advantage to our clients and their contractors.”

“There is no doubt that computer software will never replace the traditional skills and experience of the architect however by adding 21st Century technology to our architectural expertise and craftsmanship we are reducing risk and adding value for our clients and contractors.”

Curraheen Hospital, Cork, Eire. Despite the challenges of the recession, this new project emerges from the ground as we go to press. A design collaboration between JDDK and Irish practice STW Architects and being built by BAM, it will provide 44 palliative and 75 general elderly care beds for the population of the Cork region.



Framework Success for Your Homes Newcastle

The provision of social housing is forming an increasing proportion of our workload with projects for Housing Associations and other Registered Social Landlords (RSL's) now matching our traditional work for private developers.

At the end of July, following a competitive tender process which included our design proposals, our client, Frank Haslam Milan, was appointed onto a framework agreement for Your Homes Newcastle for the construction of some 300 properties on 13 separate sites over the next two to three years. As part of the framework, FHM now have three projects going through the planning process for which we are providing architectural services.

At Jubilee Road in Fawdon, we are seeking planning permission on FHM's behalf for the construction of 19 two bedroom homes designed especially for 'Young Families'. The scheme is designed to provide dedicated supported housing for young families in the city who have low level support needs. These families will go on to progress into stable long-term tenancies but as a consequence of their immediate situation, require some short-term housing support before this occurs.

15 of the homes are two bedroom apartments designed for three people with access balconies built around a south facing central courtyard whilst the remaining four homes are slightly larger two bedroom houses designed for four people. The scheme will also include a communal internal and external play area, a lounge area and an office/interview room.

We are also working up schemes with FHM for Your Homes Newcastle's Learning Disabled package at Napier Street in Shieldfield and on the Fossway in Walker. Whilst the Napier Street scheme is for next year, both schemes are to provide supported accommodation for people with learning disabilities.

The Fossway development is for 12 apartments in a two storey building which will include support accommodation of an office, common room, concierge suite, and a 'touchdown' space for support, care and health services staff. The scheme also includes five bungalows with ten of the homes having full wheelchair access and the remainder designed to 'Lifetime Homes Standard'. The apartments will be assessed under the BREEAM Multi-Residential scheme (to achieve Very Good), and the houses will be Code for Sustainable Homes Level 3.

Steve McCoy, FHM Commercial Director, commented:

“ We've worked with JDDK for many years, but always previously as a contractor. With the framework arrangement the relationship differs as we get the opportunity to choose the architects we want to work with and immediately chose them.

JDDK assisted with our bid and came up with an excellent design which will not only surpass the client's expectations but also allow us to build the type of buildings we want to construct - what particularly impressed YHN was the flexibility of the scheme which will allow different uses for the developments over the years as the client's needs change - the community facilities, for example, could easily be converted into an additional apartment if this is required in the future.

The reason the practice offers additional value to us is by approaching briefs and challenges from a different angle - we look forward to working with them for many years to come! ”

Your Homes Newcastle's Fossway scheme will provide supported accommodation for people with learning disabilities in 12 apartments and five bungalows.

